

VOR/DME BSV 112.4 Chan 71	APP CRS 127°	Rwy Idg TDZE Apt Elev 1164	N/A N/A 1164
---	------------------------	---	---

VOR-A

CARROLL COUNTY-TOLSON (T50)

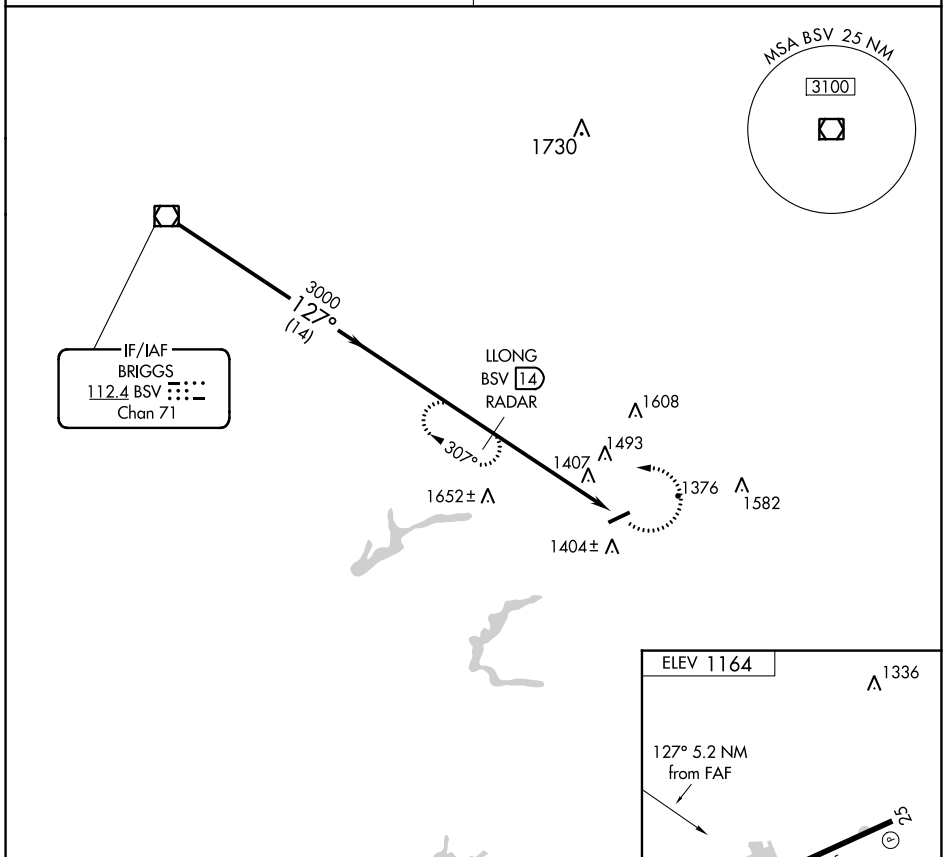
DME or RADAR required.

Procedure NA at night. Use Akron-Canton altimeter setting; when not received, use New Philadelphia altimeter setting and increase MDA 20 feet.

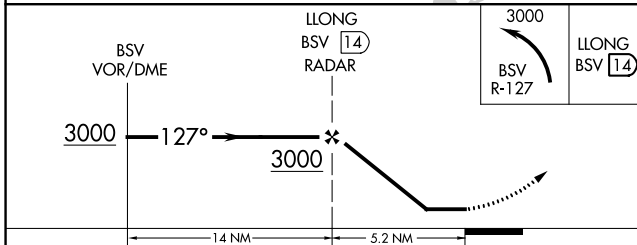
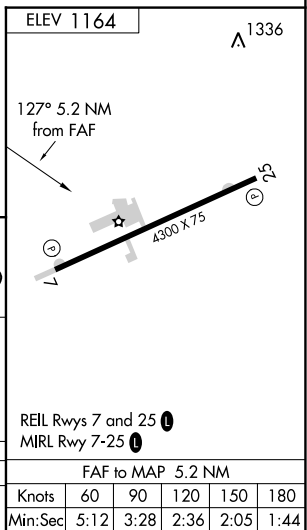
MISSED APPROACH: Climbing left turn to 3000 on BSV VOR/DME R-127 to LLONG/BSV 14 DME/RADAR and hold.

CLEVELAND APP CON ★
125.5 371.875

UNICOM
122.7 (CTAF) 1



IF/IAF
BRIGGS
112.4 BSV
Chan 71



CATEGORY	A	B	C	D
CIRCLING	1940-1	777 (800-1)	NA	

FAF to MAP 5.2 NM					
Knots	60	90	120	150	180
Min:Sec	5:12	3:28	2:36	2:05	1:44

VOR-A

EC-2, 23 MAR 2023 to 20 APR 2023

EC-2, 23 MAR 2023 to 20 APR 2023