

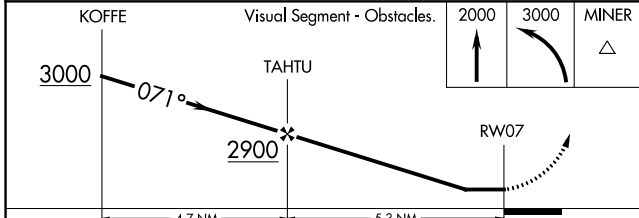
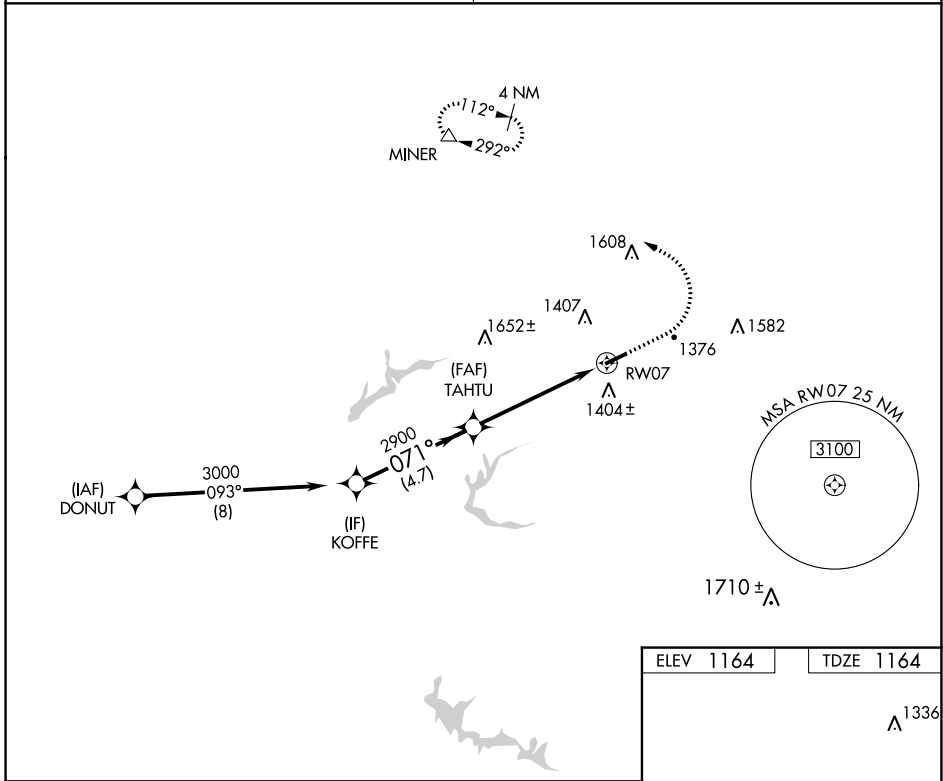
WAAS CH 62930 W07A	APP CRS 071°	Rwy Idg TDZE 1164 Apt Elev 1164	4300
--	------------------------	---	-------------

RNAV (GPS) RWY 7

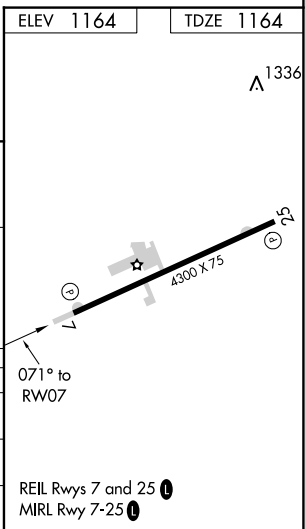
CARROLL COUNTY-TOLSON (T'SO)

RNP APCH.	Procedure NA at night. Use Akron-Canton Rgnl altimeter setting; when not received use New Philadelphia altimeter and increase all MDA 20 feet. Rwy 7 helicopter visibility reduction below 1 SM NA.	MISSED APPROACH: Climb to 2000 then climbing left turn to 3000 direct MINER and hold.
-----------	---	---

CLEVELAND APP CON★ 125.5 371.875	UNICOM 122.7 (CTAF) 0
--	---------------------------------



CATEGORY	4.7 NM		5.3 NM	
	A	B	C	D
LP MDA	1760-1	596 (600-1)	NA	
LNAV MDA	1820-1	656 (700-1)	NA	
C CIRCLING	1840-1	676 (700-1)	NA	



EC-2, 23 MAR 2023 to 20 APR 2023

EC-2, 23 MAR 2023 to 20 APR 2023