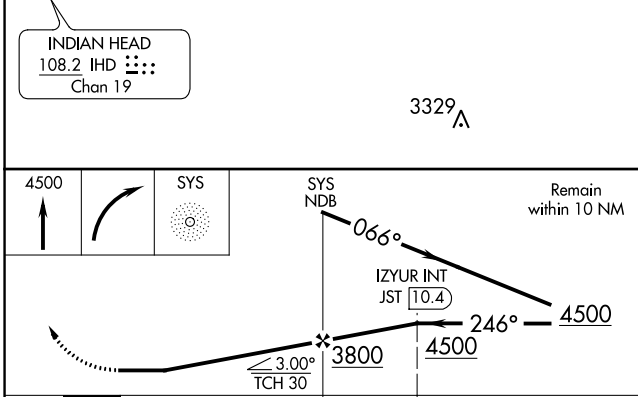
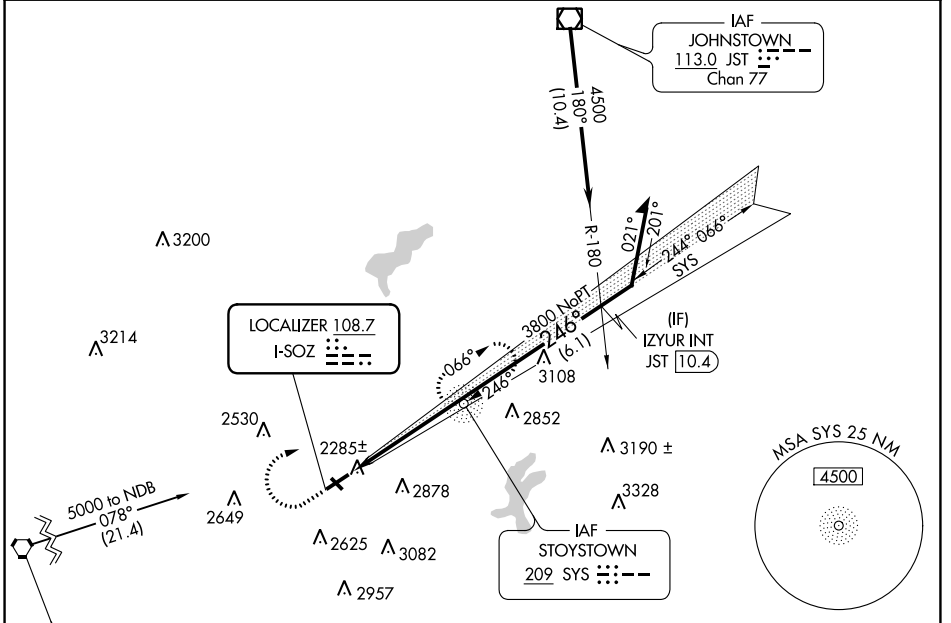


LOC I-SOZ 108.7	APP CRS 246°	Rwy Idg TDZE Apt Elev	5002 2240 2275
---------------------------	------------------------	-----------------------------	---

LOC RWY 25
SOMERSET COUNTY (2G9)

ADF required.		MISSED APPROACH: Climb to 4500 then right turn direct SYS NDB and hold.
Procedure NA at night. Rwy 25 helicopter visibility reduction below 1 SM NA. Circling NA to Rwy's 14 and 32.		
AWOS-3P 133.8	JOHNSTOWN APP CON ★ 121.2 299.2	UNICOM 122.8 (CTAF)



ELEV 2275	TDZE 2240
246° 4.9 NM from FAF 1.5% UP 5002 X 75 2729 X 150 1.0% UP 2729 X 150	
MIRL Rwy 7-25 REIL Rwy's 7 and 25	
FAF to MAP 4.9 NM	
Knots	60 90 120 150 180
Min:Sec	4:54 3:16 2:27 1:58 1:38

CATEGORY	A	B	C	D
S-25	2700-1	460 (500-1)	2700-1 $\frac{3}{8}$ 460 (500-1 $\frac{3}{8}$)	2700-1 $\frac{1}{2}$ 460 (500-1 $\frac{1}{2}$)
CIRCLING	2820-1 545 (600-1)	2920-1 645 (700-1)	3520-3	1245 (1300-3)

NE-4, 23 MAR 2023 to 20 APR 2023

NE-4, 23 MAR 2023 to 20 APR 2023