

WAAS CH <b>78107</b> <b>W24A</b>	APP CRS <b>239°</b>	Rwy Idg TDZE Apt Elev	<b>5001</b> <b>818</b> <b>819</b>
--	------------------------	-----------------------------	---

# RNAV (GPS) RWY 24

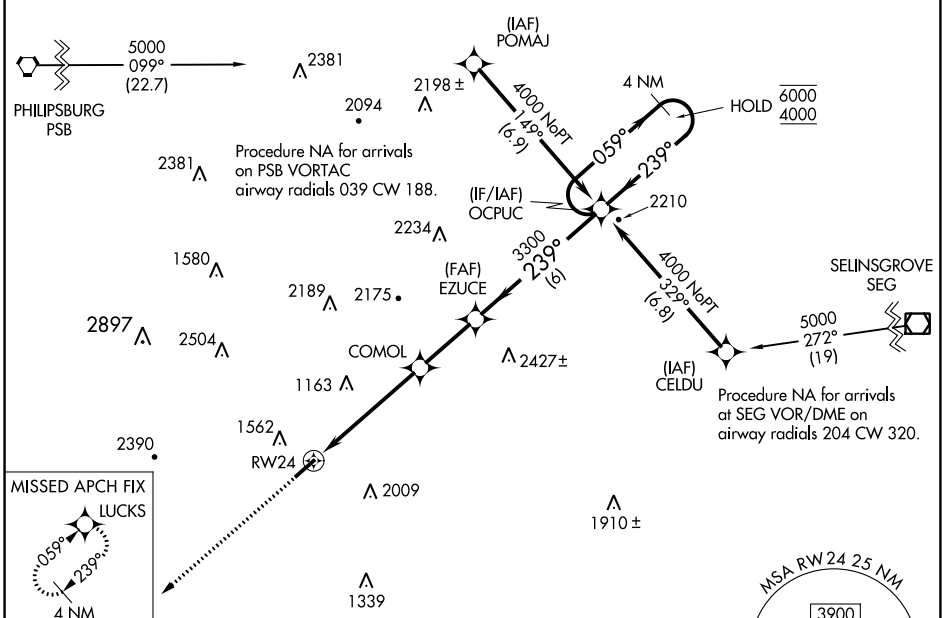
MIFFLIN COUNTY (R.V.L)

RNP APCH - GPS.

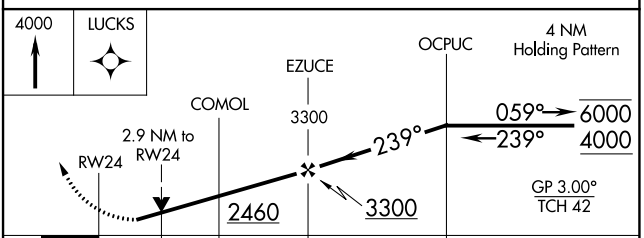
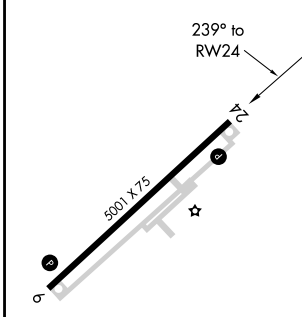
**⚠** Rwy 24 helicopter visibility reduction below 3/4 SM NA. Baro-VNAV NA.  
**❄** -15°C

MISSED APPROACH:  
Climb to 4000 direct  
LUCKS and hold.

AWOS-3PT <b>123.85</b>	NEW YORK CENTER <b>134.8 338.3</b>	UNICOM <b>122.7 (CTAF)</b>
---------------------------	---------------------------------------	-------------------------------



ELEV 819	TDZE 818
----------	----------



CATEGORY	A	B	C	D
LPV DA		1506-2	688 (700-2)	
LNAV/VNAV DA		1870-4	1052 (1100-4)	
LNAV MDA	1780-1 1/4 962 (1000-1 1/4)	1780-1 1/2 962 (1000-1 1/2)	1780-3	962 (1000-3)

REIL Rws 6 and 24 **Ⓛ**  
MIRL Rwy 6-24 **Ⓛ**

NE-4, 23 MAR 2023 to 20 APR 2023

NE-4, 23 MAR 2023 to 20 APR 2023