

(FRSBE1.FRSBE) 22139

AL-5972 (FAA)

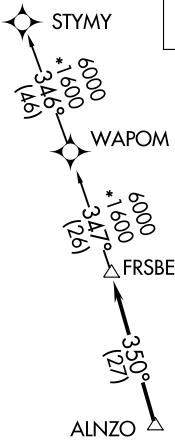
POMPANO BEACH AIRPARK (PMP)  
POMPANO BEACH, FLORIDA

# FRSBE ONE DEPARTURE (RNAV)

**TOP ALTITUDE:  
ASSIGNED BY ATC**

RNAV 1-DME/DME IRU or GPS.  
RADAR required.

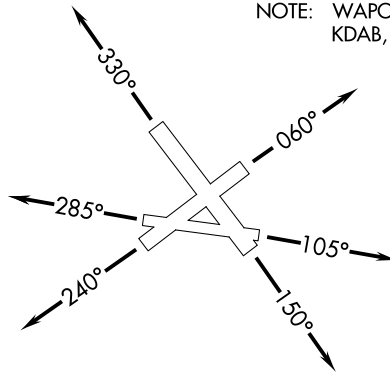
ATIS  
120.55  
GND CON  
121.9  
POMPANO BEACH TOWER\*  
125.4 (CTAF)  
MIAMI DEP CON  
126.05 251.1



### TAKEOFF MINIMUMS

Rwys 6, 24, 28, 33: Standard.  
Rwy 10: 300-1¼ or standard with minimum climb of 265' per NM to 280.  
Rwy 15: 400-1⅜ or standard with minimum climb of 425' per NM to 470.

- NOTE: Jet aircraft only.
- NOTE: Accelerate to 250K, if unable, advise ATC.
- NOTE: WAPOM Transition for KMCO, KDAB, and KMLB area arrivals.



NOTE: Chart not to scale.

## DEPARTURE ROUTE DESCRIPTION

- TAKEOFF RUNWAY 6:** Climb on heading 060° or as assigned by ATC for RADAR vectors to ALNZO, thence. . . .
- TAKEOFF RUNWAY 10:** Climb on heading 105° or as assigned by ATC for RADAR vectors to ALNZO, thence. . . .
- TAKEOFF RUNWAY 15:** Climb on heading 150° or as assigned by ATC for RADAR vectors to ALNZO, thence. . . .
- TAKEOFF RUNWAY 24:** Climb on heading 240° or as assigned by ATC for RADAR vectors to ALNZO, thence. . . .
- TAKEOFF RUNWAY 28:** Climb on heading 285° or as assigned by ATC for RADAR vectors to ALNZO, thence. . . .
- TAKEOFF RUNWAY 33:** Climb on heading 330° or as assigned by ATC for RADAR vectors to ALNZO, thence. . . .

. . . . on track 350° to FRSBE, then on (transition). Maintatin ATC assigned altitude, expect filed altitude 10 minutes after departure.

STYMY TRANSITION (FRSBE1.STYMY)  
WAPOM TRANSITION (FRSBE1.WAPOM)

**FRSBE ONE DEPARTURE (RNAV)**  
(FRSBE1.FRSBE) 19MAY22

POMPANO BEACH, FLORIDA  
POMPANO BEACH AIRPARK (PMP)

SE-3, 23 MAR 2023 to 20 APR 2023

SE-3, 23 MAR 2023 to 20 APR 2023