

APP CRS	Rwy Idg	<b>4009</b>
<b>189°</b>	TDZE	<b>390</b>
	Apt Elev	<b>394</b>

# RNAV (GPS) Z RWY 19

RICHLAND (R.LD)

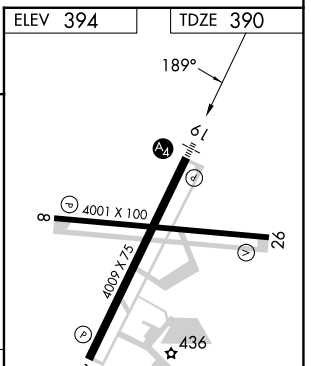
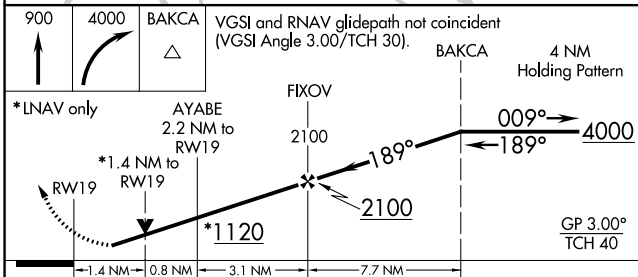
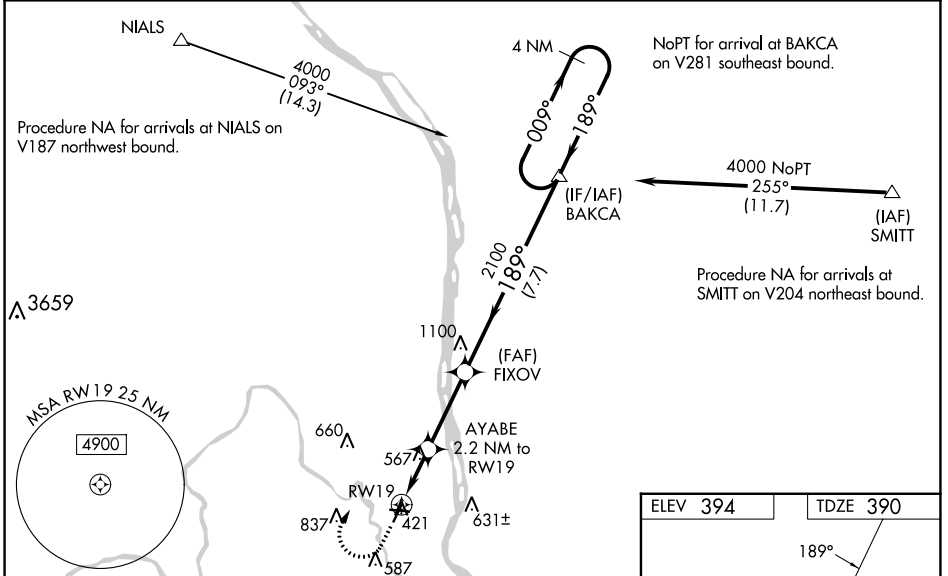
**NA** For uncompensated Baro-VNAV systems, LNAV/VNAV NA below -15°C (4°F) or above 41°C (106°F). DME/DME RNP-0.3 NA. When local altimeter setting not received, use Pasco altimeter setting and increase all DA 21 feet and all MDA 40 feet. Increase LNAV Cats C and D visibility 1/8 mile and Circling Cat C 1/4 mile. For inop MALS increase LNAV/VNAV all Cats visibility to 7/8 mile and increase LNAV Cat D visibility to 1 3/8 mile. Helicopter visibility reduction below 3/4 SM NA. VDP and Baro/VNAV NA when using Pasco altimeter setting. For inoperative MALS when using Pasco altimeter setting increase LNAV/VNAV all Cats visibility to 7/8 and LNAV Cats C and D visibility to 1 1/2.

# Missed approach requires minimum climb of 340 feet per NM to 2000; if unable to meet climb gradient see RNAV (GPS) Y Rwy 19.

**MALS**

**MISSED APPROACH:** Climb to 900 then climbing right turn to 4000 direct BAKCA and hold, continue climb-in-hold to 4000.

AWOS-3PT <b>132.675</b>	SPOKANE APP CON <b>128.75 377.2</b>	CLNC DEL <b>122.4</b>	UNICOM <b>122.7 (CTAF)</b>
----------------------------	--	--------------------------	-------------------------------



CATEGORY	A	B	C	D
LNAV/VNAV DA	#640-3/4 250 (300-3/4)			
LNAV MDA	#880-3/4 490 (500-3/4)	#880-1 1/8 490 (500-1 1/8)		
<b>C</b> CIRCLING	920-1 526 (600-1)	1000-1 606 (700-1)	1200-2 1/4 806 (900-2 1/4)	1940-3 1546 (1600-3)

REIL Rwy 1 and 19 **1**  
MIRL Rwy 1-19 **1**  
MIRL Rwy 8-26

NW-1, 23 MAR 2023 to 20 APR 2023

NW-1, 23 MAR 2023 to 20 APR 2023