

VORTAC RIC 114.1 Chan 88	APP CRS 165°	Rwy Idg TDZE Apt Elev	5402 207 207
--	------------------------	-----------------------------	---

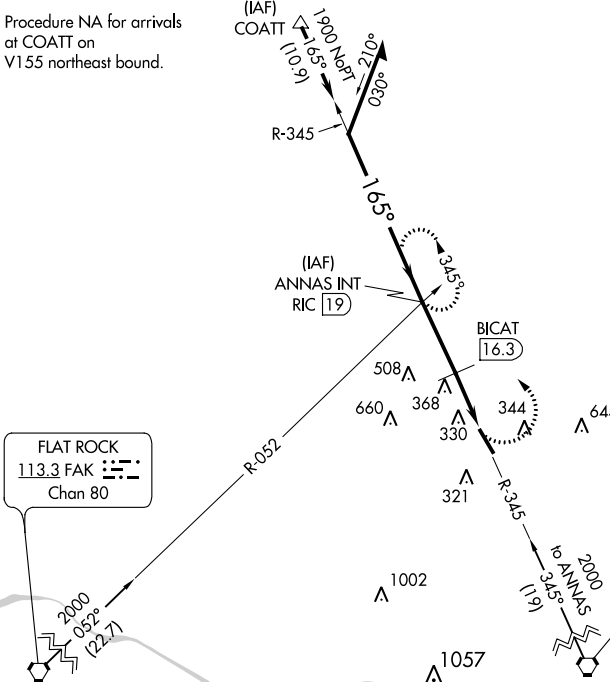
VOR RWY 16
HANOVER COUNTY MUNI (OFP)

⚠ When local altimeter setting not received, use Richmond Intl altimeter setting and increase all MDA 40 feet. Rwy 16 helicopter visibility reduction below ¼ SM NA.

⚠ MISSED APPROACH: Climbing left turn to 2000 via RIC R-345 to ANNAS INT/19 DME and hold.

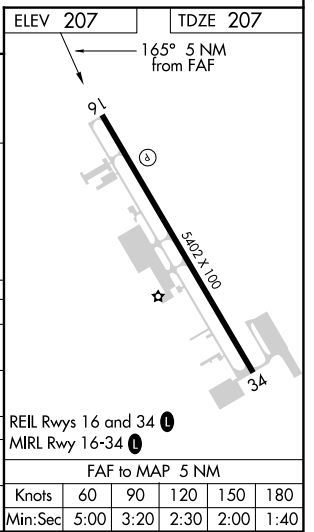
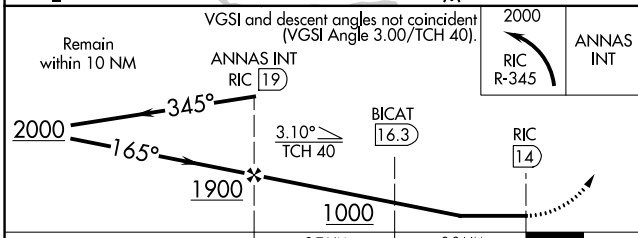
ASOS 119.025	POTOMAC APP CON 126.75 307.2	CLNC DEL 125.4	UNICOM 122.7 (CTAF) 📻
------------------------	--	--------------------------	--

Procedure NA for arrivals at COATT on V155 northeast bound.



FLAT ROCK
113.3 FAK
Chan 80

RICHMOND
114.1 RIC
Chan 88



CATEGORY	A	B	C	D
S-16	1000-1 793 (800-1)	1000-1¼ 793 (800-1¼)	1000-2¼ 793 (800-2¼)	1000-2½ 793 (800-2½)
C CIRCLING	1000-1 793 (800-1)	1000-1¼ 793 (800-1¼)	1000-2¼ 793 (800-2¼)	1020-2¾ 813 (900-2¾)
BICAT FIX MINIMUMS (DME REQUIRED)				
S-16	820-1	613 (700-1)	820-1¾	613 (700-1¾)
C CIRCLING	820-1	613 (700-1)	900-2 693 (700-2)	1020-2¾ 813 (900-2¾)

REIL Rwys 16 and 34 **📻**
MIRL Rwy 16-34 **📻**

FAF to MAP 5 NM

Knots	60	90	120	150	180
Min:Sec	5:00	3:20	2:30	2:00	1:40

NE-3, 23 MAR 2023 to 20 APR 2023

NE-3, 23 MAR 2023 to 20 APR 2023