

WAAS CH 70536 W25A	APP CRS 255°	Rwy Idg TDZE Apt Elev	4001 1065 1067
----------------------------------------	------------------------	-----------------------------	-------------------------------------------

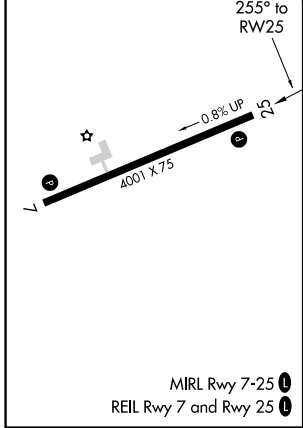
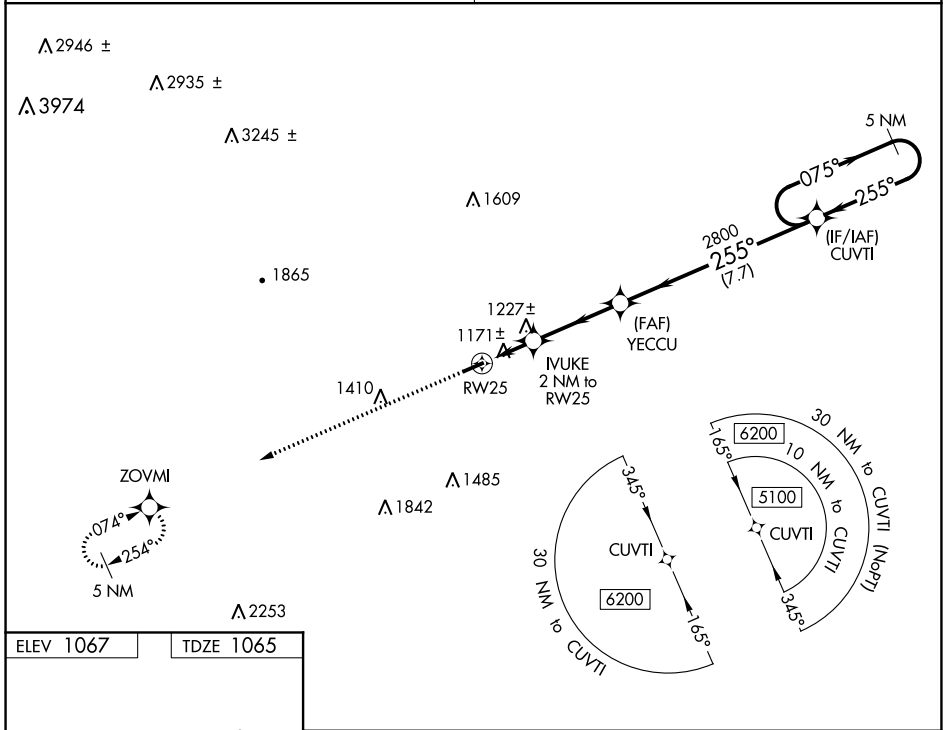
RNAV (GPS) RWY 25

ELKIN MUNI (ZEF)

▼ Obtain local altimeter setting on CTAF; when not received, use Mount Airy altimeter setting and increase MDA 80 ft and LP and Circling Cats C/D
▲ NA visibility ¼ mile. DME/DME RNP-0.3 NA. Procedure NA at night.
 Helicopter visibility reduction below 1 SM NA.

MISSED APPROACH: Climb to 4900 direct ZOVMI and hold, continue climb-in-hold to 4900.

ATLANTA CENTER 125.15 263.0	UNICOM 123.05 (CTAF) 0
---------------------------------------	----------------------------------



ELEV 1067	TDZE 1065	4900 ZOVMI	Visual Segment - Obstacles.	5 NM Holding Pattern
		RW25 1720 2 NM	IVUKE 2 NM to RW25 2800 3.4 NM	YECCU 2800 7.7 NM
CATEGORY	A	B	C	D
LP MDA	1440-1	375 (400-1)	1440-1 $\frac{1}{8}$	375 (400-1 $\frac{1}{8}$)
LNAV MDA	1480-1	415 (500-1)	1480-1 $\frac{3}{8}$	415 (500-1 $\frac{3}{8}$)
<input checked="" type="checkbox"/> CIRCLING	1540-1	1600-1	1680-1 $\frac{3}{4}$	1840-2 $\frac{1}{2}$
	473 (500-1)	533 (600-1)	613 (700-1 $\frac{3}{4}$)	773 (800-2 $\frac{1}{2}$)

SE-2, 23 MAR 2023 to 20 APR 2023

SE-2, 23 MAR 2023 to 20 APR 2023