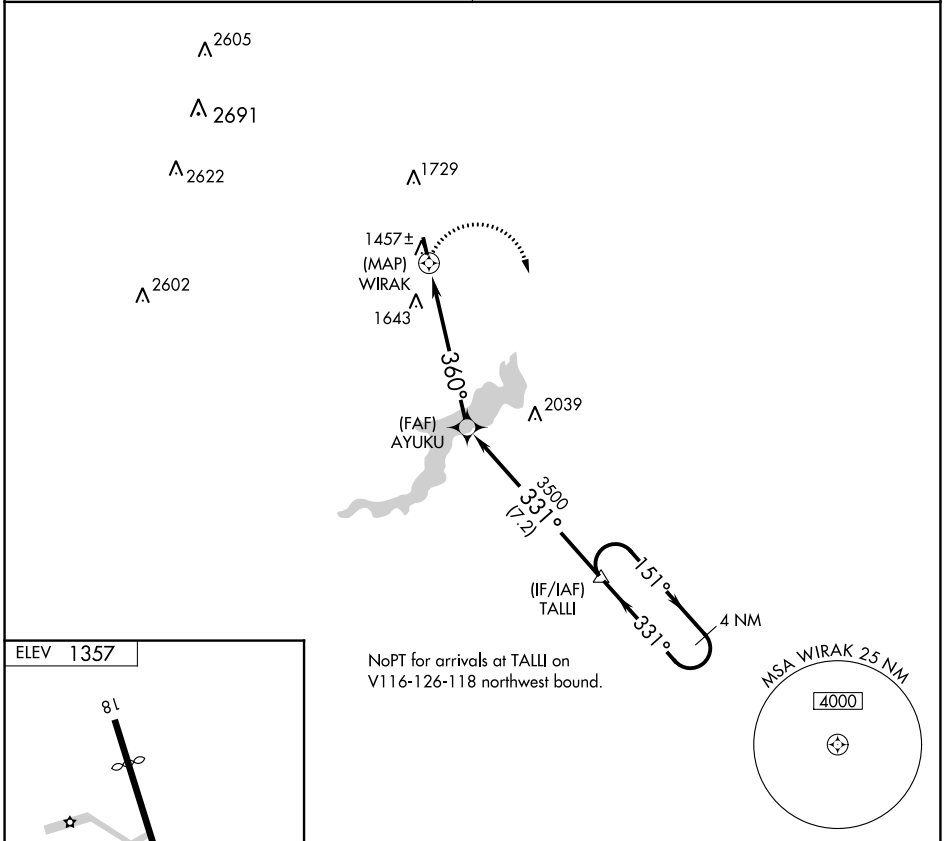


APP CRS	Rwy Idg	N/A
360°	TDZE	N/A
	Apt Elev	1357

# RNAV (GPS)-B

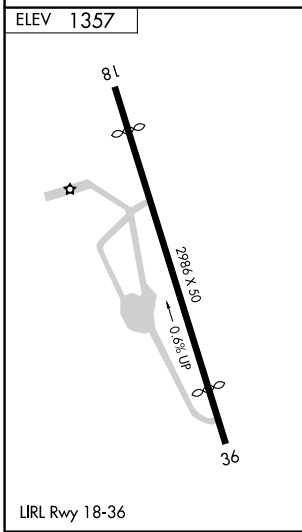
CHERRY RIDGE (N30)

<p><b>▼</b> DME/DME RNP-0.3 NA. Procedure NA at night. Obtain local altimeter setting on CTAF; when not received, use Wilkes-Barre/Scranton Intl altimeter setting, and increase MDA 320 feet and Cat A visibility 1/4 mile.</p> <p><b>▲</b> NA</p>	<p>MISSED APPROACH: Climbing right turn to 4000 direct TALLI and hold.</p>
<p>WILKES-BARRE APP CON</p> <p><b>120.95 256.7</b></p>	<p>UNICOM</p> <p><b>122.8 (CTAF)</b></p>



NE-4, 23 MAR 2023 to 20 APR 2023

NE-4, 23 MAR 2023 to 20 APR 2023



4000	TALLI	4 NM Holding Pattern		
CATEGORY	A	B	C	D
CIRCLING	2080-1 723 (800-1)		NA	