

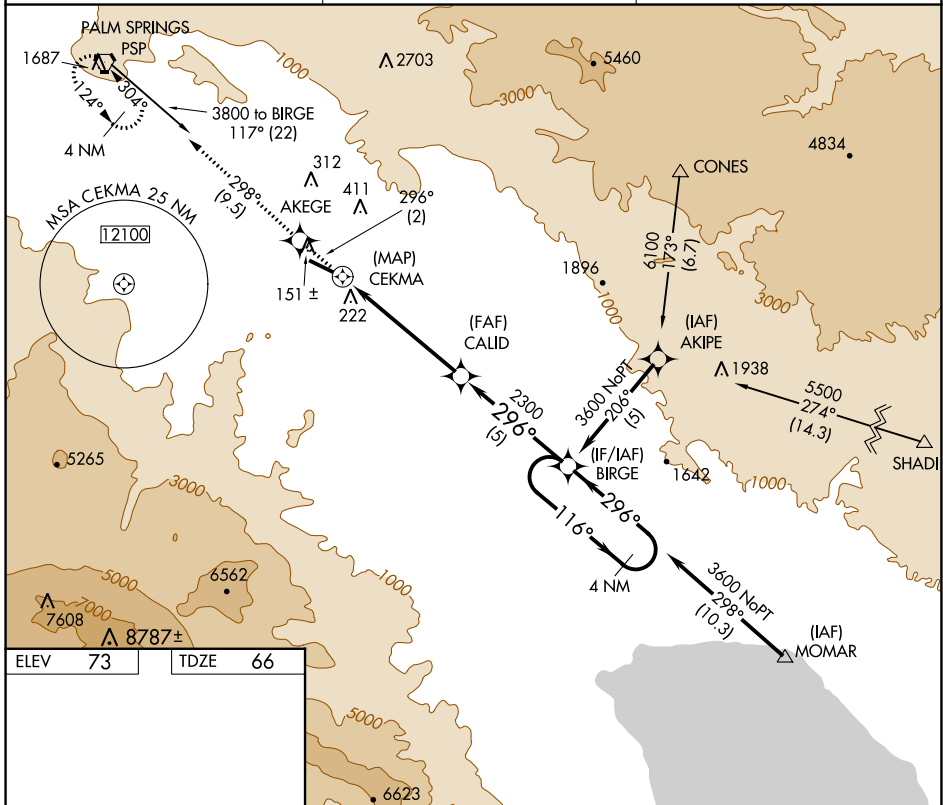
APP CRS	Rwy Idg	4702
296°	TDZE	66
	Apt Elev	73

RNAV (GPS) RWY 28

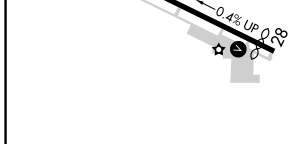
BERMUDA DUNES (UDD)

RNP APCH.	MISSED APPROACH: Climb to 3300 via course 296° to AKEGE WP then right turn via course 298° to PSP VORTAC and hold.
<p>▼ Use Jacqueline Cochran Rgnl altimeter setting. Rwy 28 Straight-in and Circling minimums NA at night. Rwy 28 helicopter visibility reduction below 1 SM NA.</p>	

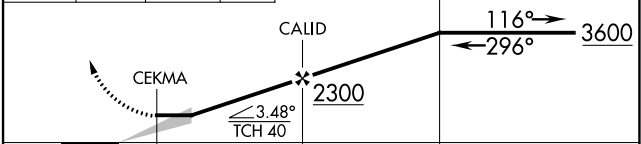
TRM ASOS 118.325	SOCAL APP CON * 135.275 251.1	UNICOM 122.8 (CTAF) 0
----------------------------	---	---------------------------------



ELEV 73	TDZE 66
---------	---------



3300	AKEGE	PSP	VGSI and descent angles not coincident (VGSI Angle 3.00/TCH 33).
crs 296°	crs 298°	4 NM Holding Pattern	



CATEGORY	A	B	C	D
LNAV MDA	1020-1¼ 954 (1000-1¼)	1020-1½ 954 (1000-1½)	1020-3 954 (1000-3)	NA
CIRCLING	1020-1¼ 947 (1000-1¼)	1020-1½ 947 (1000-1½)	1100-3 1027 (1100-3)	NA

SW-3, 23 MAR 2023 to 20 APR 2023

SW-3, 23 MAR 2023 to 20 APR 2023