

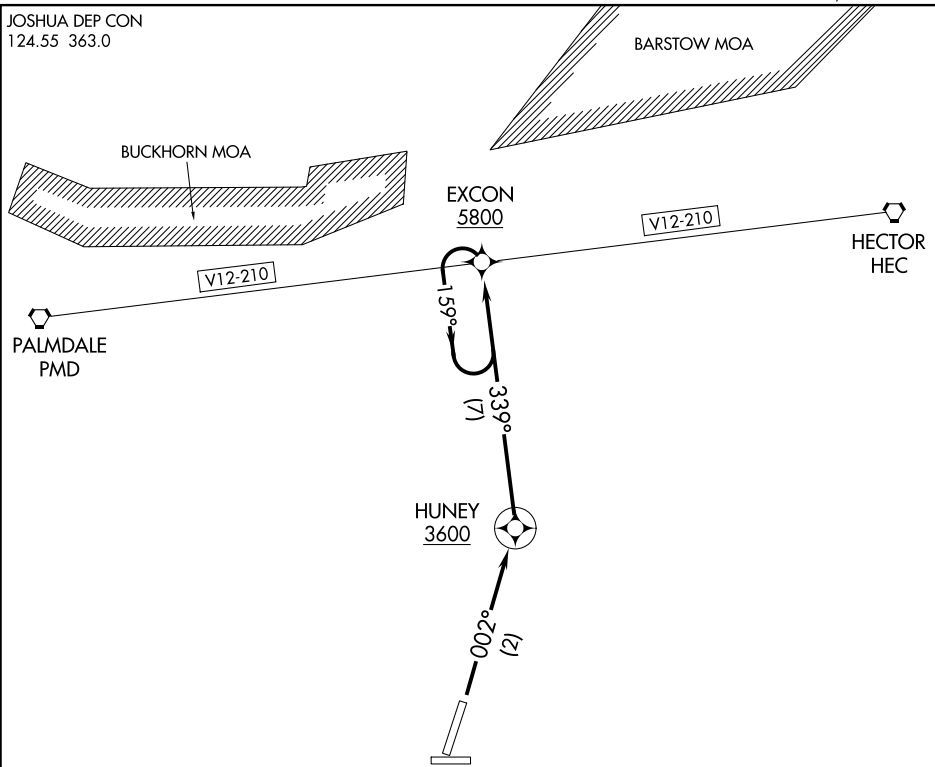
(EXCON1 .EXCON) 23082

EXCON ONE DEPARTURE (OBSTACLE) (RNAV)

AL-5822 (FAA)

APPLE VALLEY (APV)
APPLE VALLEY, CALIFORNIA

JOSHUA DEP CON
124.55 363.0



NOTE: GPS required.

NOTE: RNAV 1.

TAKEOFF MINIMUMS

Rwy 36: 300-1 or standard with a minimum climb gradient of 340' per NM until 5800'.

NOTE: Chart not to scale.

DEPARTURE ROUTE DESCRIPTION

TAKEOFF RUNWAY 36: Climb via 002° course to HUNEY WP, then 339° course to EXCON WP, then climb in EXCON WP holding pattern (hold S left turns 339° inbound) to 7500' MSL then proceed on course.

EXCON ONE DEPARTURE (OBSTACLE) (RNAV)

(EXCON1 .EXCON) 15JUN00

APPLE VALLEY, CALIFORNIA
APPLE VALLEY (APV)

SW-3, 23 MAR 2023 to 20 APR 2023

SW-3, 23 MAR 2023 to 20 APR 2023