

APP CRS	Rwy Idg	2900
067°	TDZE	558
	Apt Elev	560

RNAV (GPS) RWY 7

SKY MANOR (N40)

RNP APCH

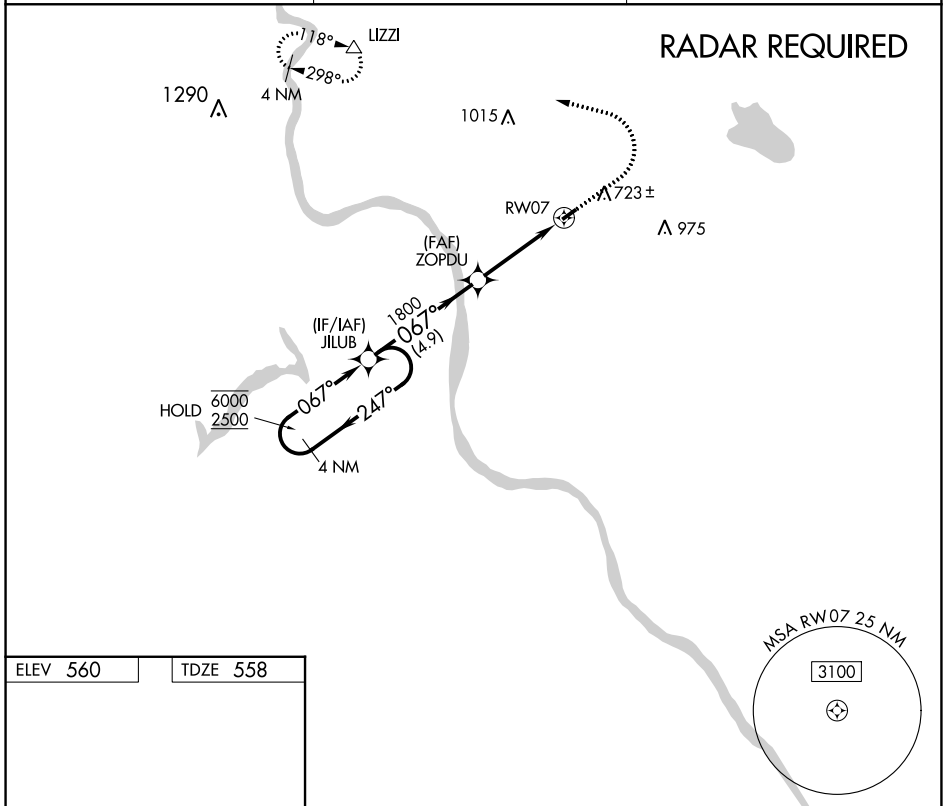
Procedure NA at night. When local altimeter setting not received, use Lehigh Valley Intl altimeter setting. Rwy 7 helicopter visibility reduction below 1 SM NA.

MISSED APPROACH: Climb to 1100 then climbing left turn to 3000 direct LIZZI and hold.

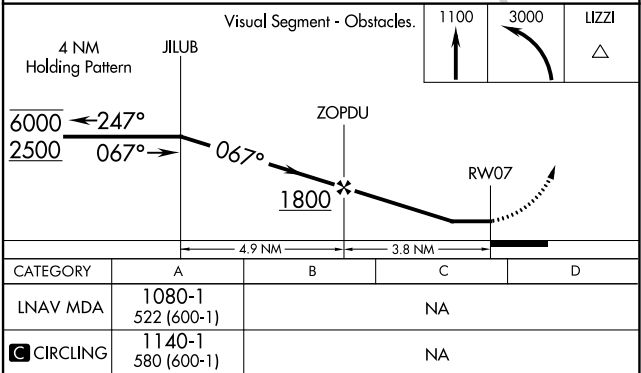
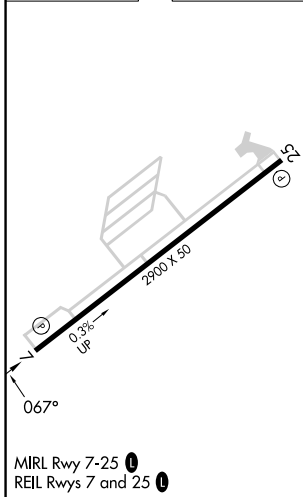
AWOS-3
121.725

ALLENTOWN APP CON
119.65 124.45 351.8

UNICOM
122.975 (CTAF) 0



ELEV 560	TDZE 558
----------	----------



NE-2, 23 MAR 2023 to 20 APR 2023

NE-2, 23 MAR 2023 to 20 APR 2023