

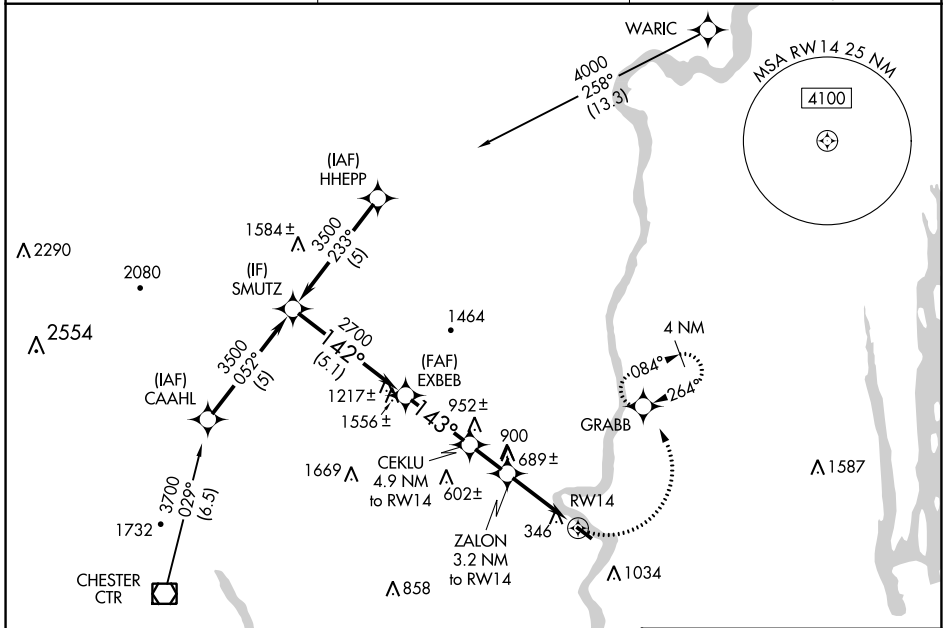
APP CRS	Rwy Idg	<b>3335</b>
<b>143°</b>	TDZE	<b>121</b>
	Apt Elev	<b>121</b>

# RNAV (GPS) RWY 14

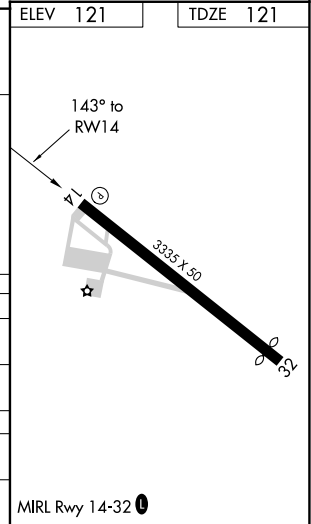
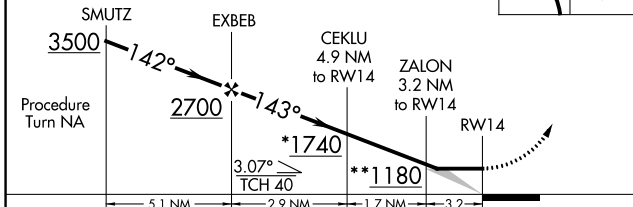
NORTHAMPTON (7B2)

RNP APCH.	<p><b>▼</b> Procedure NA at night. Obtain local altimeter setting on CTAF; when not received, use Windsor Locks altimeter setting. Rwy 14 helicopter visibility reduction below 1 SM NA.</p> <p><b>▲</b> NA</p>	<p>MISSED APPROACH: Climbing left turn to 3000 direct GRABB and hold, continue climb-in-hold to 3000.</p>
-----------	---	---

YANKEE APP CON <b>125.35 281.5</b>	CLNC DEL <b>133.6</b>	UNICOM <b>122.7 (CTAF) 0</b>
---------------------------------------	--------------------------	---------------------------------



<p>VGSI and descent angles not coincident (VGSI Angle 4.50/TCH 60).                  * 1820 when using Windsor Locks altimeter setting.                  ** 1260 when using Windsor Locks altimeter setting.</p>	<p>3000</p> <p>GRABB</p>	<p>ELEV 121</p>	<p>TDZE 121</p>
--	--------------------------	-----------------	-----------------



CATEGORY	A	B	C	D
RNAV MDA	940-1 819 (900-1)	940-1¼ 819 (900-1¼)		NA
CIRCLING	940-1¼ 819 (900-1¼)	1400-1½ 1279 (1300-1½)		NA
WINDSOR LOCKS ALTIMETER SETTING MINIMUMS				
RNAV MDA	1020-1¼	899 (900-1¼)		NA
CIRCLING	1020-1¼ 899 (900-1¼)	1460-1½ 1339 (1400-1½)		NA

NE-1, 23 MAR 2023 to 20 APR 2023

NE-1, 23 MAR 2023 to 20 APR 2023