

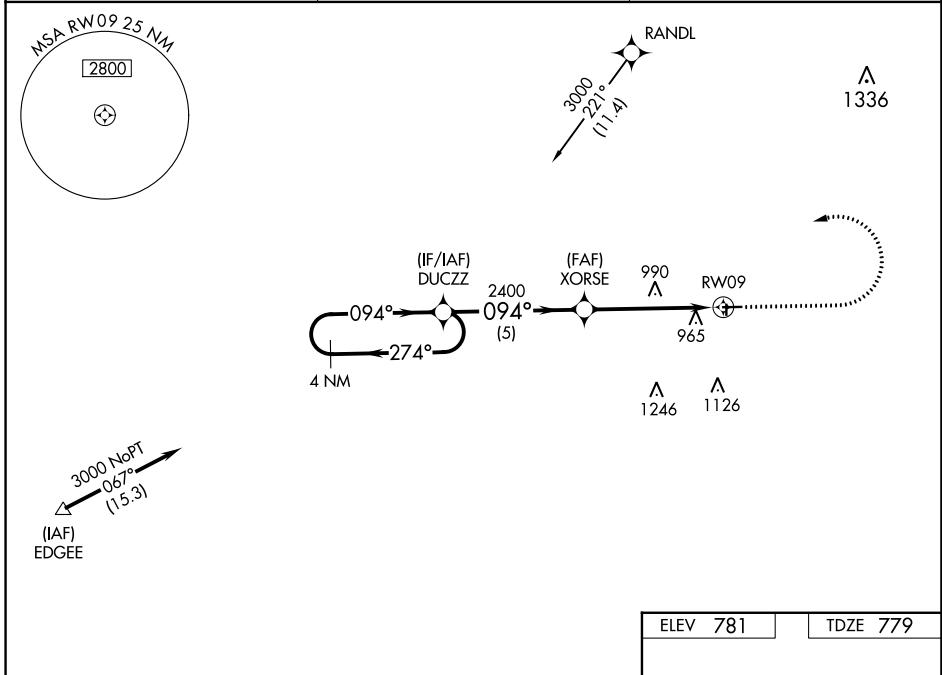
WAAS CH <b>93828</b> <b>W09A</b>	APP CRS <b>094°</b>	Rwy Idg TDZE Apt Elev	<b>3882</b> <b>779</b> <b>781</b>
--	------------------------	-----------------------------	---

# RNAV (GPS) RWY 9

FULTON COUNTY (USE)

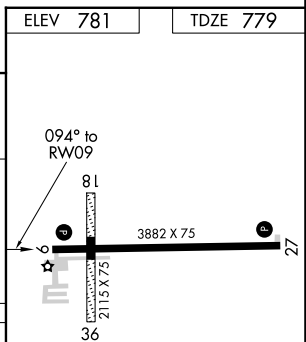
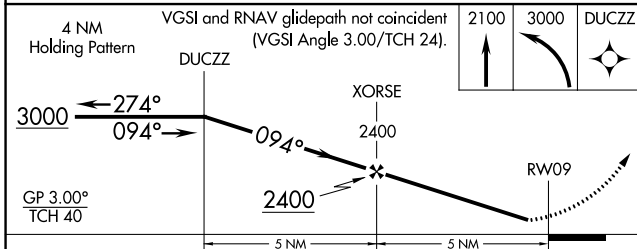
RNP APCH - GPS.	MISSED APPROACH: Climb to 2100 then climbing left turn to 3000 direct DUCZZ and hold.
-----------------	--

AWOS-3P <b>127.375</b>	TOLEDO APP CON <b>134.35 317.55</b>	UNICOM <b>123.0 (CTAF)</b>
---------------------------	--	-------------------------------



EC-2, 23 MAR 2023 to 20 APR 2023

EC-2, 23 MAR 2023 to 20 APR 2023



CATEGORY	A	B	C	D
LPV DA	1109-1 330 (400-1)			
LNAV/VNAV DA	1198-1½ 419 (500-1½)			
LNAV MDA	1300-1	521 (600-1)	1300-1½	521 (600-1½)
CIRCLING	1320-1	539 (600-1)	1480-2 699 (700-2)	1480-2¼ 699 (700-2¼)

ELEV 781	TDZE 779
REIL Rwys 9 and 27	
MIRL Rwy 9-27	