

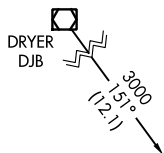
APP CRS	Rwy Idg	<b>3556</b>
<b>091°</b>	TDZE	<b>1179</b>
	Apt Elev	<b>1190</b>

# RNAV (GPS) RWY 9

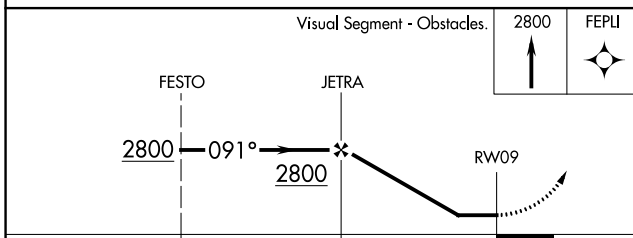
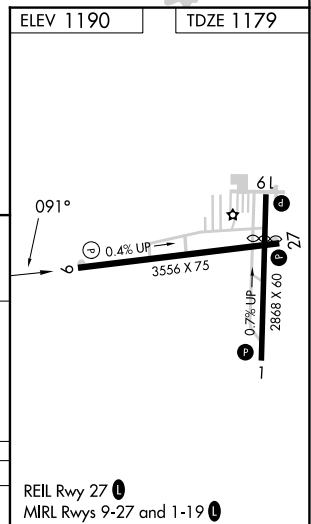
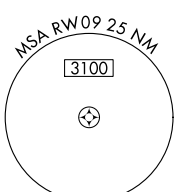
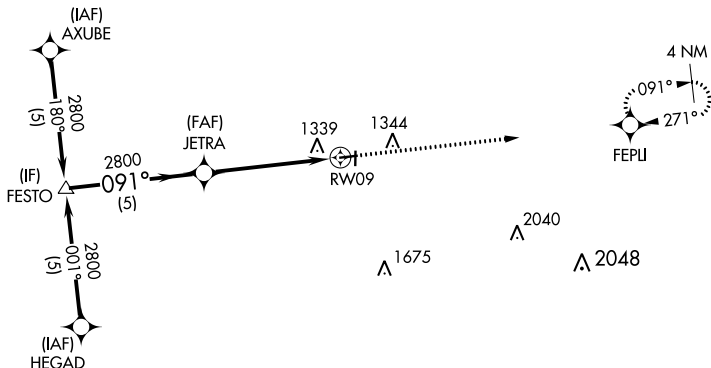
MEDINA MUNI (1G5)

RNP APCH.	<p>Procedure NA at night. Rwy 9 helicopter visibility reduction below 1 SM NA. Use Cleveland-Hopkins Intl altimeter setting.</p>	MISSED APPROACH: Climb to 2800 direct FEPLI and hold.
-----------	--	---

CLE ASOS <b>127.85</b>	CLEVELAND APP CON <b>125.35 346.325</b>	UNICOM <b>123.0 (CTAF) 0</b>
---------------------------	--	---------------------------------



Procedure NA for arrival on DJB VOR/DME airway radials 074 CW 219.



CATEGORY	A	B	C	D
LNNAV MDA	1700-1	521 (600-1)	1700-1½ 521 (600-1½)	NA

EC-2, 23 MAR 2023 to 20 APR 2023

EC-2, 23 MAR 2023 to 20 APR 2023