

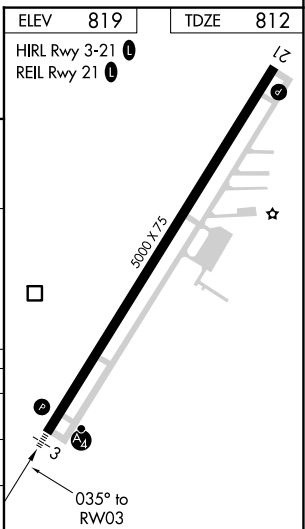
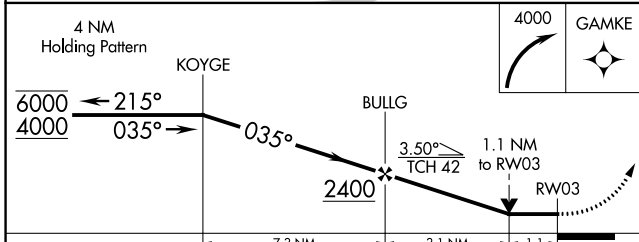
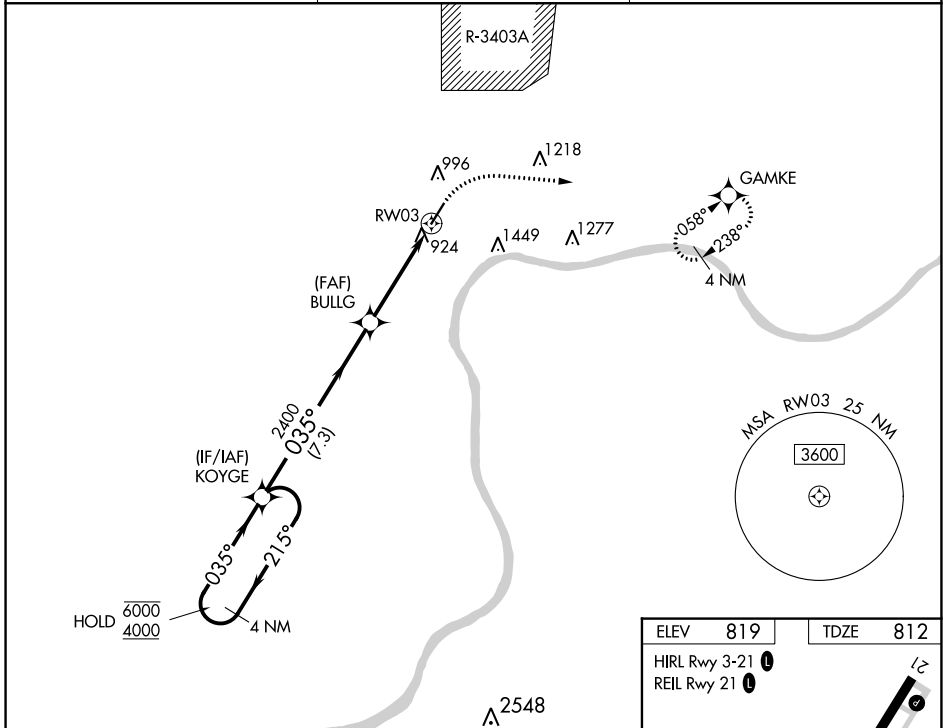
APP CRS 035°	Rwy ldg TDZE Apt Elev	5000 812 819
------------------------	-----------------------------	---

RNAV (GPS) Y RWY 3

MADISON MUNI (IMS)

RNP APCH - GPS.	MALSF	MISSED APPROACH: Climbing right turn to 4000 direct GAMKE and hold, continue climb-in-hold to 4000. **Missed approach requires minimum climb of 410 feet per NM to 1900.
<p>▼ Circling NA for Cat C east of Rwy 3-21. Rwy 3 helicopter visibility reduction below 3/4 SM NA. For inop ALS increase **LNAV Cat C visibility to 1 3/8 SM.</p> <p>⚠</p>		

AWOS-3 119.175	LOUISVILLE APP CON 132.075 327.0	UNICOM 123.0 (CTAF) 0
--------------------------	--	---------------------------------



CATEGORY	A	B	C	D
LNAV MDA**	1260-3/4	448 (500-3/4)	1260-1 448 (500-1)	NA
LNAV MDA	1420-3/4	608 (700-3/4)	1420-1 1/2 608 (700-1 1/2)	NA
C CIRCLING	1420-1	601 (700-1)	1420-1 3/4 601 (700-1 3/4)	NA

EC-2, 23 MAR 2023 to 20 APR 2023

EC-2, 23 MAR 2023 to 20 APR 2023