

WAAS CH 61019 W02A	APP CRS 026°	Rwy Idg TDZE 930 Apt Elev 946
--	------------------------	---

RNAV (GPS) RWY 2

FARMINGTON RGNL (F.A.M)

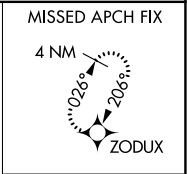
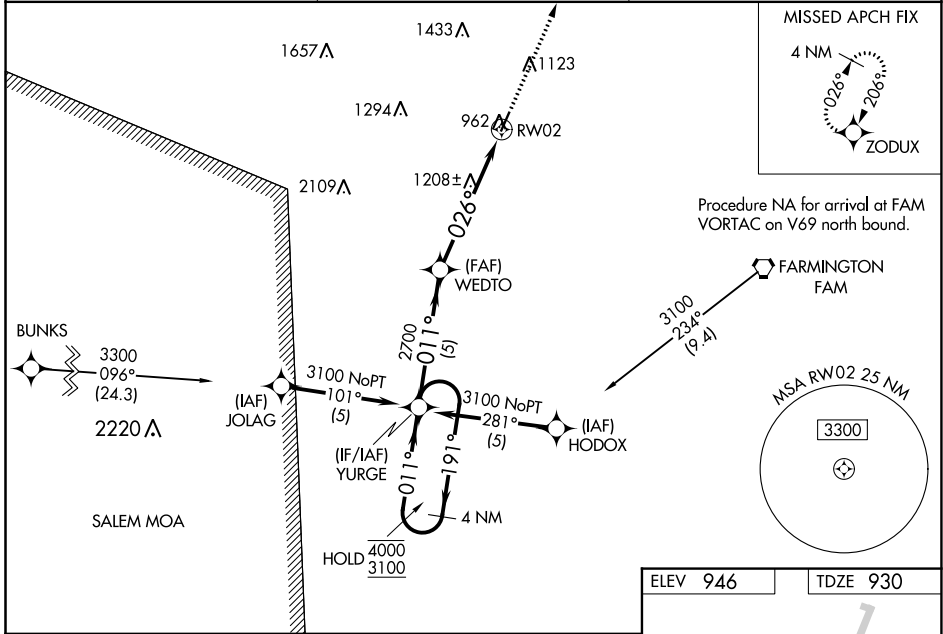
RNP APCH - GPS.

⚠ Circling Rwy 20 NA at night. Baro-VNAV and VDP NA when using Sparta altimeter setting. Rwy 2 helicopter visibility reduction below $\frac{3}{4}$ SM NA. For uncompensated Baro-VNAV systems, LNAV/VNAV NA below -16°C or above 54°C . When local altimeter setting not received, use Sparta altimeter setting and increase LPV DA to 1334 feet and all visibilities $\frac{1}{8}$ SM, increase LNAV/VNAV DA to 1395 feet and all visibilities $\frac{3}{8}$ SM; increase all MDAs 160 feet.

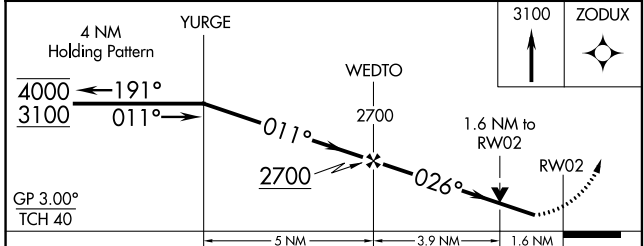
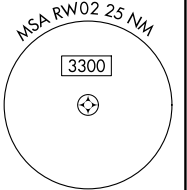
MISSED APPROACH: Climb to 3100 direct ZODUX and hold.

AWOS-3PT 119.275	KANSAS CITY CENTER 127.475 346.275
----------------------------	--

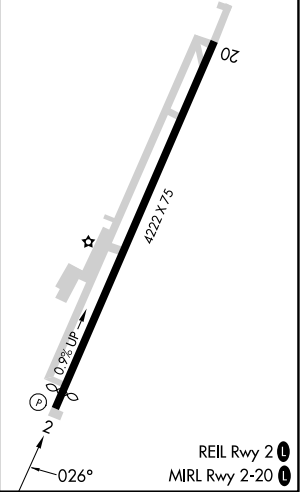
UNICOM
122.8 (CTAF) 0



Procedure NA for arrival at FAM VORTAC on V69 north bound.



ELEV 946	TDZE 930
----------	----------



CATEGORY	A	B	C	D
LPV DA	1180-1	250 (300-1)		NA
LNAV/VNAV DA	1241-1	311 (300-1)		NA
LNAV MDA	1460-1	530 (600-1)		NA
C CIRCLING	1460-1 514 (600-1)	1500-1 554 (600-1)		NA

NC-3, 23 MAR 2023 to 20 APR 2023

NC-3, 23 MAR 2023 to 20 APR 2023