

(TIFTO7.MCI) 23054

# TIFTO SEVEN DEPARTURE

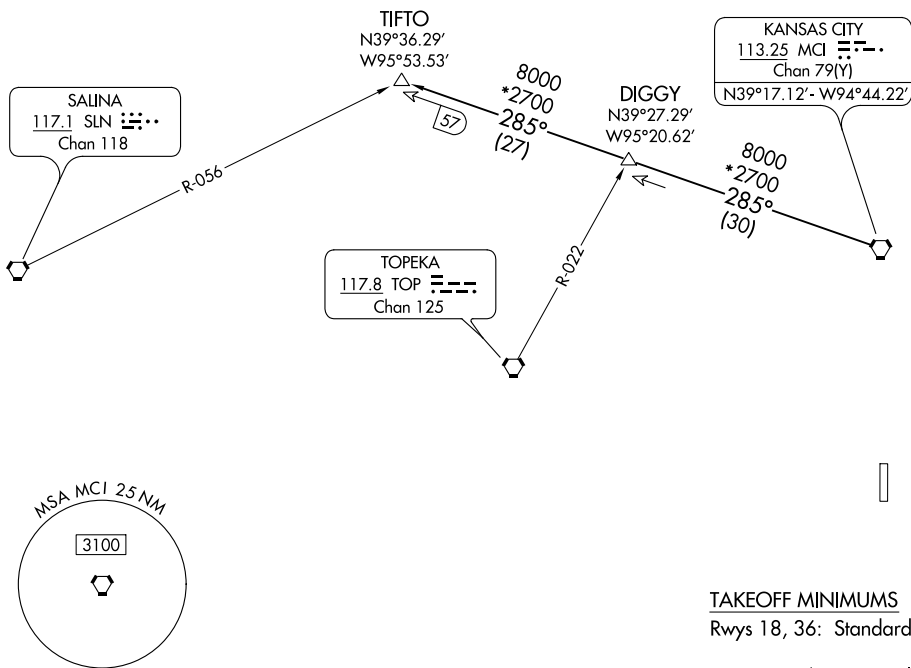
AL-5687 (FAA)

JOHNSON COUNTY EXEC (OJC)  
OLATHE, KANSAS

**TOP ALTITUDE:  
10000**

RADAR required.

ATIS  
119.35  
KANSAS CITY DEP CON  
118.9 251.075



NC-2, 23 MAR 2023 to 20 APR 2023

NC-2, 23 MAR 2023 to 20 APR 2023

TAKEOFF MINIMUMS  
Rwys 18, 36: Standard.

NOTE: Chart not to scale



## DEPARTURE ROUTE DESCRIPTION

TAKEOFF ALL RUNWAYS: Climb on assigned heading for RADAR vectors to appropriate route. Maintain 10000 or as assigned by ATC, expect filed altitude 10 minutes after departure.

TIFTO TRANSITION (TIFTO7.TIFTO): From over MCI VORTAC on MCI R-285 to TIFTO.

**TIFTO SEVEN DEPARTURE**  
(TIFTO7.MCI) 23FEB23

OLATHE, KANSAS  
JOHNSON COUNTY EXEC (OJC)