

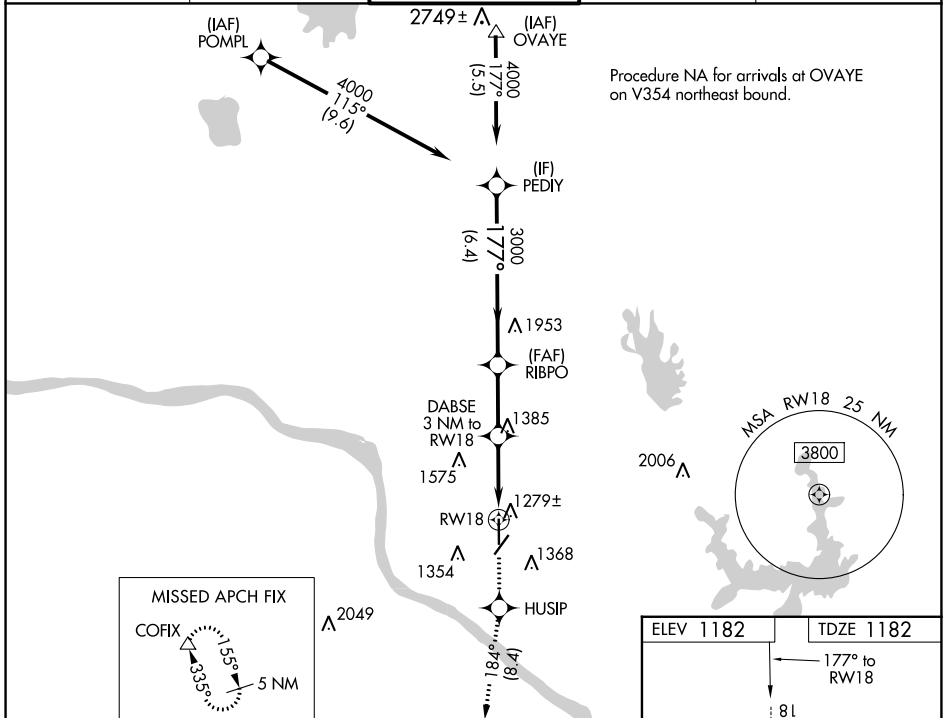
WAAS CH <b>58302</b> <b>W18A</b>	APP CRS <b>177°</b>	Rwy Idg TDZE <b>1182</b> Apt Elev <b>1182</b>	<b>5199</b>
--	------------------------	---	-------------

# RNAV (GPS) RWY 18

UNIVERSITY OF OKLAHOMA WESTHEIMER (OUN)

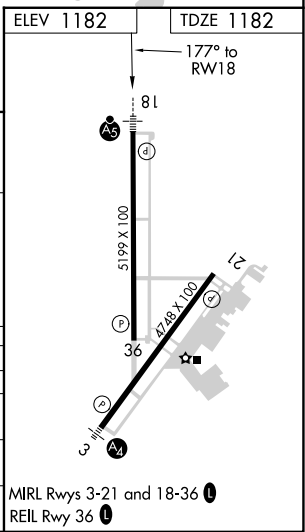
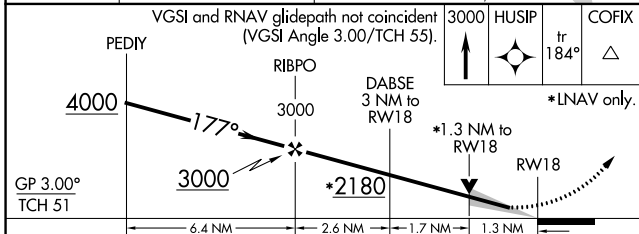
RNP APCH.	MALSR	MISSED APPROACH: Climb to 3000 direct HUSIP and track 184° to COFIX and hold.
<p>▼ For uncompensated Baro-VNAV systems, LNAV/VNAV NA below -17°C or above 54°C. For inop ALS, increase LNAV/VNAV all Cats visibility to 7/8 SM. Circling NA southeast of Rwy 3-21.</p>		

AWOS-3 <b>119.55</b>	OKE CITY APP CON <b>120.45 288.325</b>	WESTHEIMER TOWER ★ <b>118.0 (CTAF)</b>	GND CON <b>121.6</b>	UNICOM <b>122.95</b>
-------------------------	---	---	-------------------------	-------------------------



SC-1, 23 MAR 2023 to 20 APR 2023

SC-1, 23 MAR 2023 to 20 APR 2023



GP 3.00° TCH 51	*2180			
CATEGORY	A	B	C	D
LPV DA	1382-1/2		200 (200-1/2)	
LNAV/DA VNAV	1490-1/2		308 (400-1/2)	
LNAV MDA	1640-1/2	458 (500-1/2)	1640-7/8	458 (500-7/8)
CIRCLING	1660-1	478 (500-1)	1940-2 1/4 758 (800-2 1/4)	1940-2 1/2 758 (800-2 1/2)