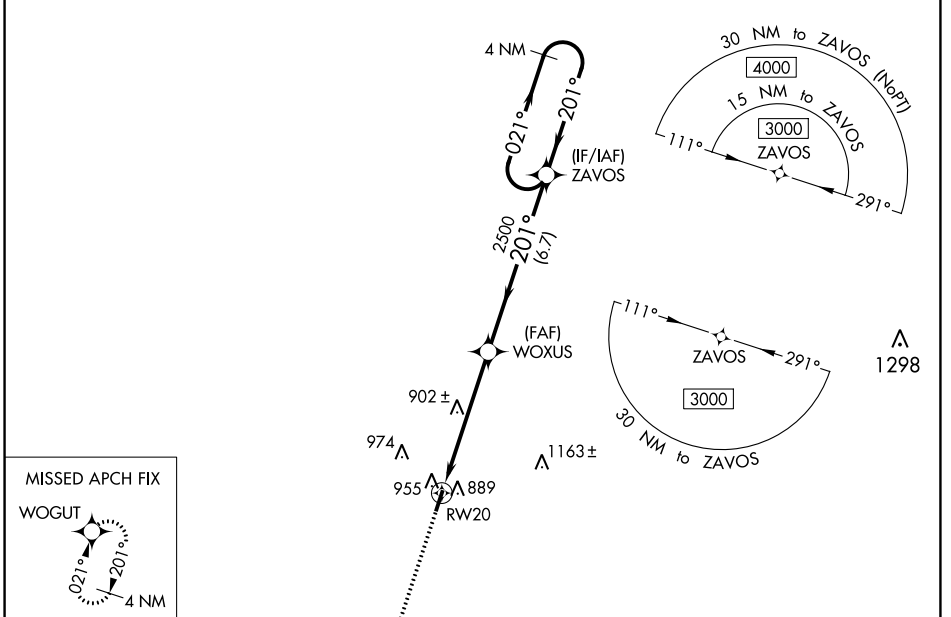


| | | |
|--|------------------------|---|
| WAAS CH 48838 W20A | APP CRS 201° | Rwy Idg 3752 TDZE 765 Apt Elev 765 |
|--|------------------------|---|

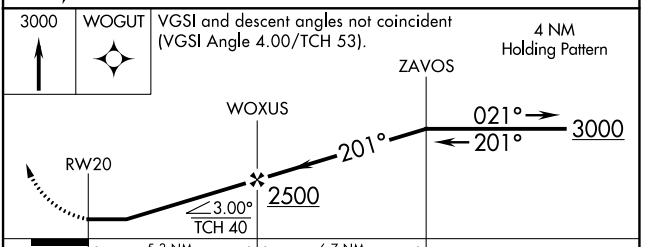
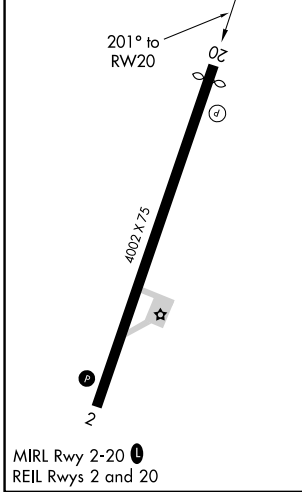
RNAV (GPS) RWY 20

CENTERVILLE MUNI (GHM)

| | |
|--|---|
| <p>▼ Obtain local altimeter setting on CTAF, when not received, use Columbia/Mount Pleasant altimeter setting and increase all MDA 80 feet. Increase LP Cats C and D visibility ¼ mile; LNAV Cats C and D ½ mile; Circling Cat D ¼ mile. DME/DME RNP-0.3 NA. Procedure NA at night. Helicopter visibility reduction below 1 SM NA.</p> <p>▲ NA</p> | <p>MISSED APPROACH: Climb to 3000 direct WOGUT and hold.</p> |
| <p>MEMPHIS CENTER 125.85 379.25</p> | <p>UNICOM 122.8(CTAF) 0</p> |



| | |
|----------|----------|
| ELEV 765 | TDZE 765 |
|----------|----------|



| CATEGORY | A | B | C | D |
|-------------------|--------|-------------|-------------------------|-------------------------|
| LP MDA | 1160-1 | 395 (400-1) | 1160-1½ | 395 (400-1½) |
| LNAV MDA | 1220-1 | 455 (500-1) | 1220-1¾ | 455 (500-1¾) |
| ☑ CIRCLING | 1260-1 | 495 (500-1) | 1280-1½ 515 (600-1½) | 1520-2½ 755 (800-2½) |

SE-1, 23 MAR 2023 to 20 APR 2023

SE-1, 23 MAR 2023 to 20 APR 2023