

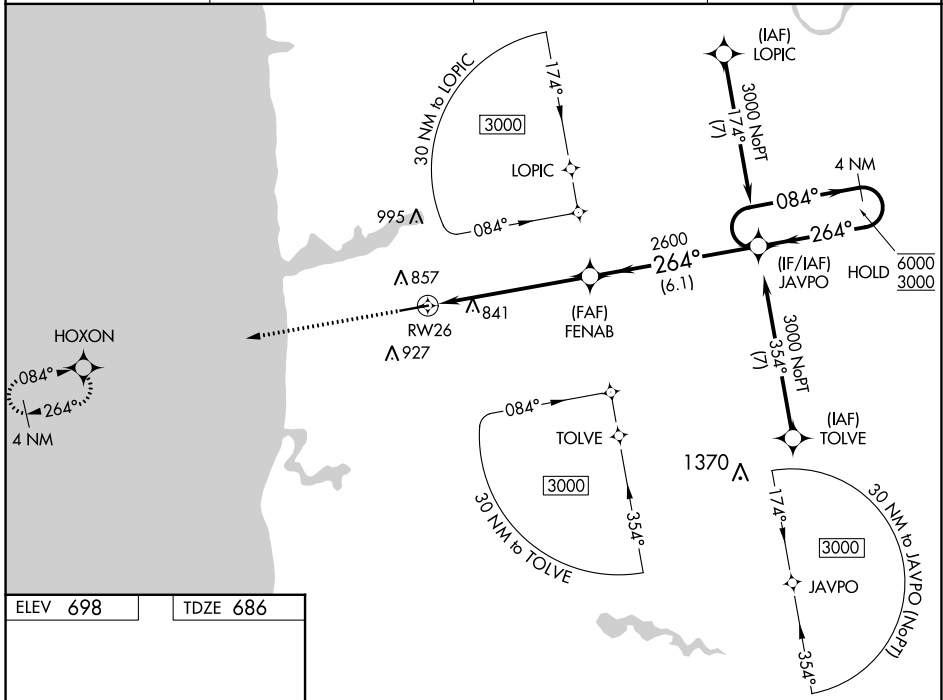
WAAS CH <b>53402</b> <b>W26A</b>	APP CRS <b>264°</b>	Rwy Idg TDZE <b>6002</b> <b>686</b> Apt Elev <b>698</b>
--	------------------------	--

# RNAV (GPS) RWY 26

WEST MICHIGAN RGNL (BIV)

RNP APCH.	MALSR	MISSED APPROACH: Climb to 2700 direct HOXON and hold.
<p><b>▽</b> For uncompensated Baro-VNAV systems, LNAV/VNAV NA below -16°C or above 54°C. <b>▲</b> For inoperative ALS, increase LNAV/VNAV all Cats visibility to 1 SM; increase LNAV Cat C visibility to 1 1/2 SM.</p>		

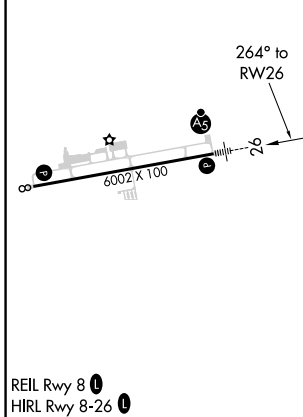
ASOS <b>119.025</b>	GREAT LAKES APP CON* <b>133.825 290.35</b>	CLNC DEL <b>123.95</b>	UNICOM <b>123.05</b> (CTAF)
------------------------	---	---------------------------	--------------------------------



EC-1, 23 MAR 2023 to 20 APR 2023

EC-1, 23 MAR 2023 to 20 APR 2023

ELEV <b>698</b>	TDZE <b>686</b>
-----------------	-----------------



2700	HOXON	*LNAV only	JAVPO	4 NM Holding Pattern
		*1.2 NM to RW26	FENAB 2600	6000 / 3000
		1.2	4.7 NM	6.1 NM
264° to RW26			264°	084°
				GP 3.00° TCH 32
REIL Rwy 8	HIRL Rwy 8-26			
CATEGORY	A	B	C	D
LPV DA	886-1/2	200 (200-1/2)		NA
LNAV/VNAV DA	1040-5/8	354 (400-5/8)		NA
LNAV MDA	1100-1/2	414 (500-1/2)	1100-3/4 414 (500-3/4)	NA
CIRCLING	1200-1 502 (600-1)	1240-1 542 (600-1)	1240-1 1/2 542 (600-1 1/2)	NA