

APP CRS **173°**  
 Rwy ldg **5000**  
 TDZE **343**  
 Apt Elev **343**

# RNAV (GPS) RWY 18

NACOGDOCHES A L MANGHAM JR RGNL (OCH)

RNP APCH-GPS.

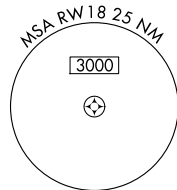
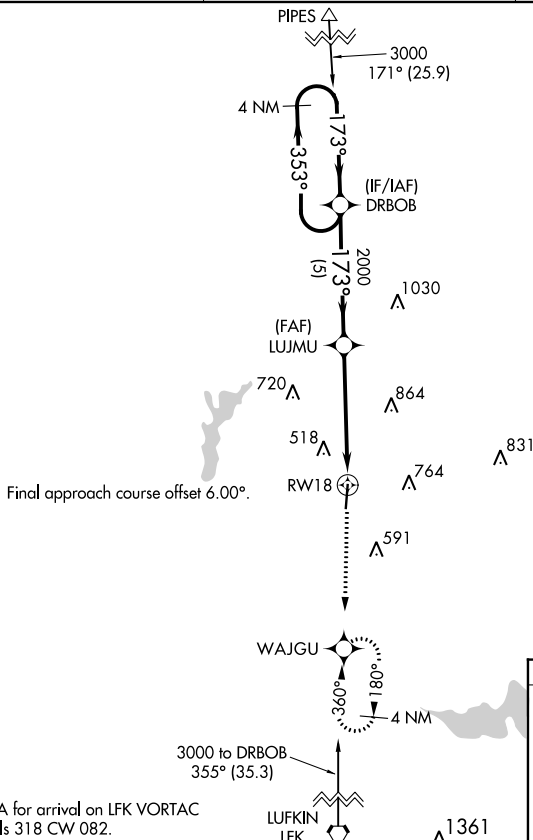
**⚠** Rwy 18 helicopter visibility reduction below 1 SM NA. When local altimeter setting not received, use Lufkin altimeter setting and increase all MDA 60 feet and visibility LNAV Cat C and Circling Cat C ¼ SM.

MISSED APPROACH: Climb to 2400 direct WAJGU and hold.

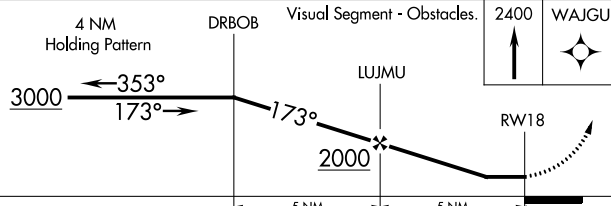
AWOS-3PT  
**135.625**

HOUSTON CENTER  
**125.175 285.575**

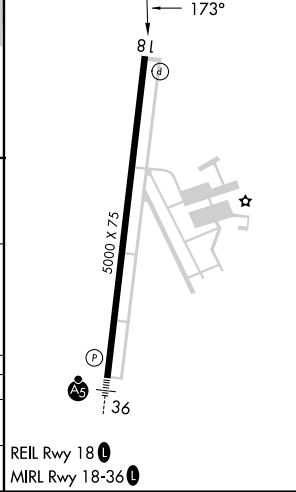
UNICOM  
**123.0(CTAF) 0**



Procedure NA for arrival on LFK VORTAC airway radials 318 CW 082.



ELEV 343 | TDZE 343



CATEGORY	A	B	C	D
LNAV MDA	980-1	637 (700-1)	980-1¾ 637 (700-1¾)	NA
CIRCLING	980-1	637 (700-1)	1080-2 737 (800-2)	NA

# RNAV (GPS) RWY 18

SC-5, 23 MAR 2023 to 20 APR 2023

SC-5, 23 MAR 2023 to 20 APR 2023