

APP CRS <b>027°</b>	Rwy Idg <b>4997</b>
	TDZE <b>614</b>
	Apt Elev <b>616</b>

# RNAV (GPS) RWY 3

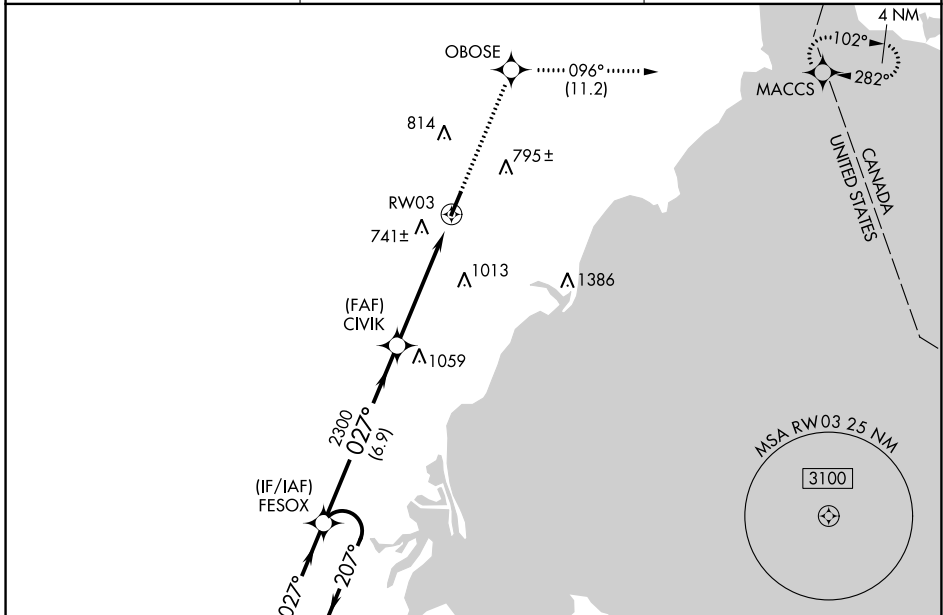
CUSTER (TTF)

RNP APCH - GPS.

**▽** When local altimeter setting not received, use Detroit Metro Wayne County altimeter setting and increase all MDAs 60 feet and LNAV visibility Cat C/D ¼ SM, and Circling visibility Cat C/D ¼ SM. Rwy 3 helicopter visibility reduction below 1 SM NA. Procedure NA at night.

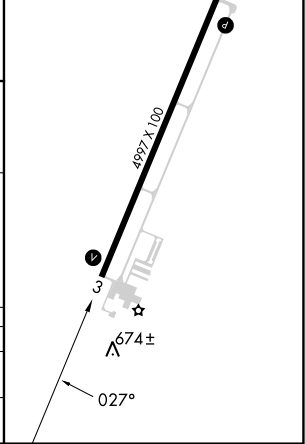
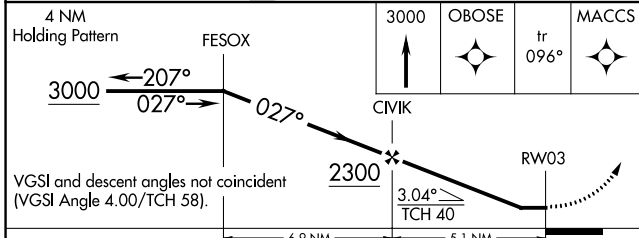
MISSED APPROACH: Climb to 3000 direct OBOSE and on track 096° to MACCS and hold.

AWOS-3 <b>119.075</b>	DETROIT APP CON <b>134.3 363.2</b>	UNICOM <b>122.7 (CTAF) 0</b>
--------------------------	---------------------------------------	---------------------------------



ELEV 616	TDZE 614
----------	----------

REIL Rwy 21 **1**  
MIRL Rwy 3-21 **1**



CATEGORY	A	B	C	D
LNAV MDA	1100-1	486 (500-1)	1100-1½ 486 (500-1¼)	1100-1½ 486 (500-1½)
CIRCLING	1120-1 504 (600-1)	1180-1 564 (600-1)	1380-2¼ 764 (800-2¼)	1380-2½ 764 (800-2½)

EC-1, 23 MAR 2023 to 20 APR 2023

EC-1, 23 MAR 2023 to 20 APR 2023