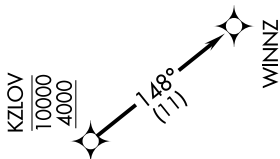


EC-1, 23 MAR 2023 to 20 APR 2023

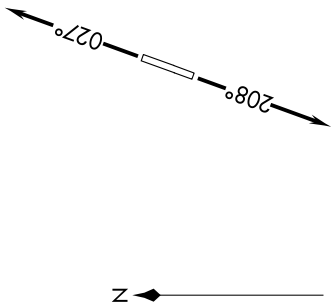
AWOS-3
119.075
CTAF
122.7
DETROIT DEP CON
134.3 284.0

RNAV 1 - DME/DME/IRU or GPS.
RADAR required.

TOP ALTITUDE:
ASSIGNED BY ATC



NOTE: Turbojet departures at/above 10000, maintain 280K until advised by ATC.
NOTE: For use by Cleveland terminal arrivals only.



TAKEOFF MINIMUMS:

Rwy 3, 21: Standard with minimum climb of 500' per NM to 1116.

NOTE: Chart not to scale.

DEPARTURE ROUTE DESCRIPTION

TAKEOFF RUNWAY 3: Climb on heading 027° or as assigned for RADAR vectors to cross KZLOV at or above 4000 and at or below 10000, thence....

TAKEOFF RUNWAY 21: Climb on heading 208° or as assigned for RADAR vectors to cross KZLOV at or above 4000 and at or below 10000, thence....

....on track 148° to WINNZ. Maintain assigned altitude, expect filed altitude ten minutes after departure.

EC-1, 23 MAR 2023 to 20 APR 2023