

(CLVIN2.CLVIN) 19227

# CLVIN TWO DEPARTURE (RNAV)

AL-5642 (FAA)

CLUSTER (TTF)  
MONROE, MICHIGAN

**TOP ALTITUDE:  
ASSIGNED BY ATC**

AWOS-3  
119.075  
CTAF  
122.7  
DETROIT DEP CON  
134.3 284.0

TAKEOFF MINIMUMS:  
Standard.

NOTE: RNAV 1.  
NOTE: RADAR required.  
NOTE: DME/DME/IRU or GPS required.  
NOTE: Turbojet departures at/above 10000,  
maintain 280K until advised by ATC.

NOTE: Chart not to scale.

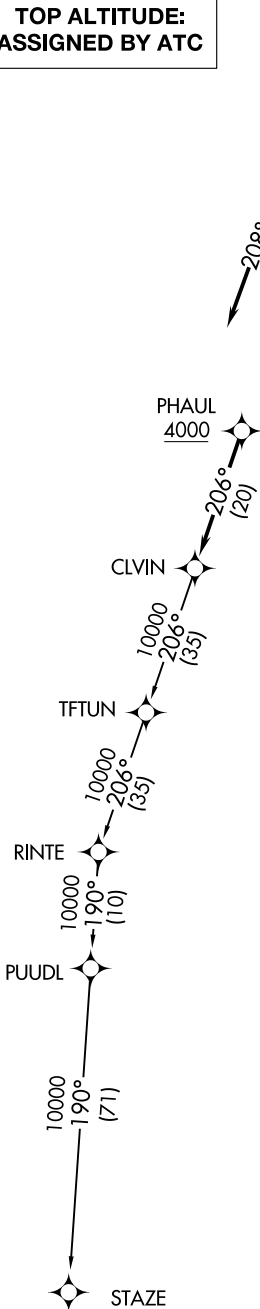
## DEPARTURE ROUTE DESCRIPTION

TAKEOFF RUNWAY 3: Climb on heading 027° or as assigned for RADAR vectors to cross PHAUL at or above 4000, thence....

TAKEOFF RUNWAY 21: Climb on heading 208° or as assigned for RADAR vectors to cross PHAUL at or above 4000, thence....

...on track 206° to CLVIN, then on (transition). Maintain ATC assigned altitude, expect filed altitude 10 minutes after departure.

STAZE TRANSITION (CLVIN2.STAZE):



EC-1, 23 MAR 2023 to 20 APR 2023

EC-1, 23 MAR 2023 to 20 APR 2023

CLVIN TWO DEPARTURE (RNAV)  
(CLVIN2.CLVIN) 15AUG19

MONROE, MICHIGAN  
CLUSTER (TTF)