

VORTAC CYN 113.4 Chan 81	APP CRS 234°	Rwy Idg TDZE Apt Elev	5835 81 86
--	------------------------	-----------------------------	---------------------------------------

VOR RWY 24

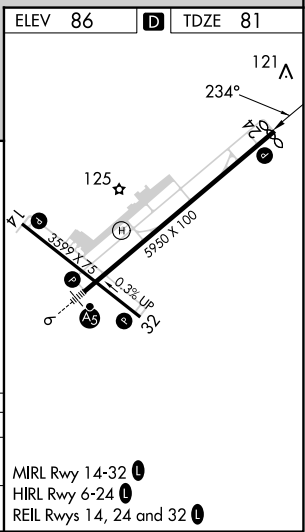
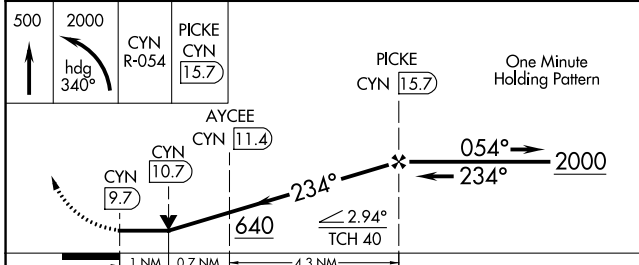
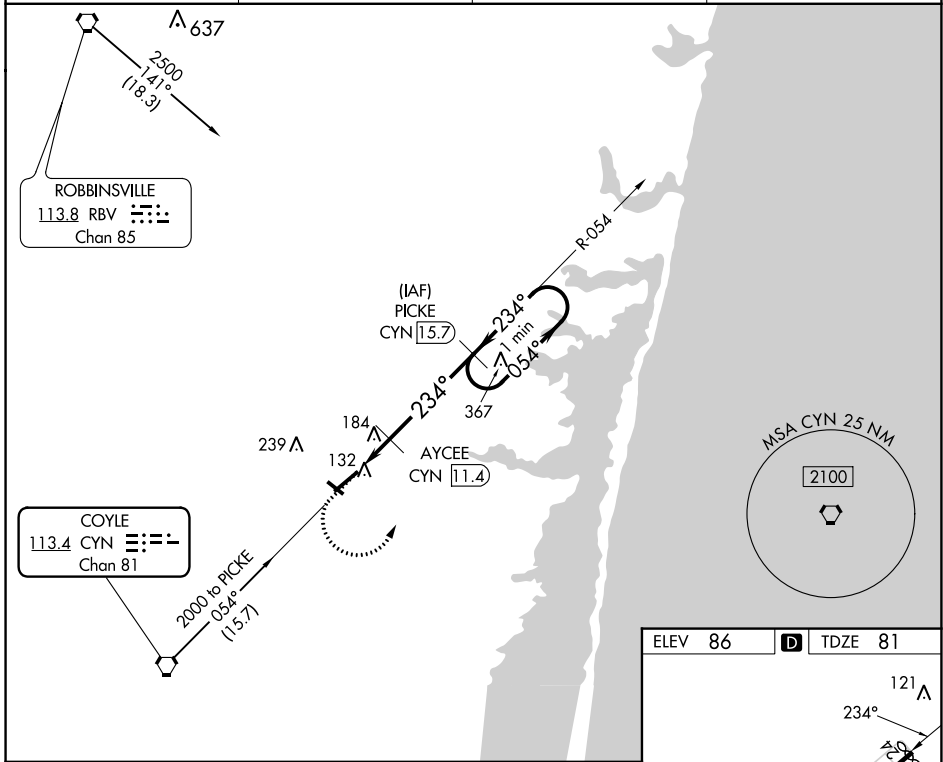
OCEAN COUNTY (MJX)

DME required for procedure entry.
DME required.

▼ Rwy 24 helicopter visibility reduction below 3/4 SM NA.
Circling Rwy 14, 32 NA at night.

MISSED APPROACH: Climb to 500 then climbing left turn to 2000 on heading 340° and on CYN VORTAC R-054 to PICKE/CYN 15.7 DME and hold.

AWOS-3PT 119.875	MC GUIRE APP CON 126.475 363.8	GCO 121.725	UNICOM 122.7 (CTAF)
----------------------------	--	-----------------------	-------------------------------



CATEGORY	A	B	C	D
S-24		440-1	359 (400-1)	
C CIRCLING	540-1 454 (500-1)	560-1 474 (500-1)	580-1½ 494 (500-1½)	700-2 614 (700-2)

MIRL Rwy 14-32 **L**
HIRL Rwy 6-24 **L**
REIL Rws 14, 24 and 32 **L**

NE-2, 23 MAR 2023 to 20 APR 2023

NE-2, 23 MAR 2023 to 20 APR 2023