

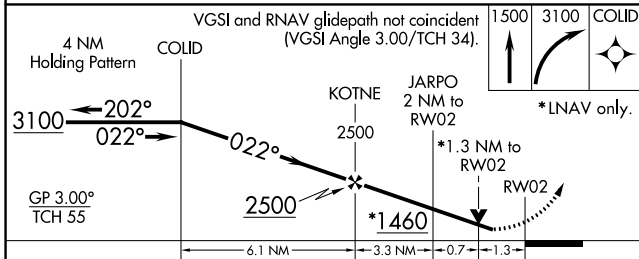
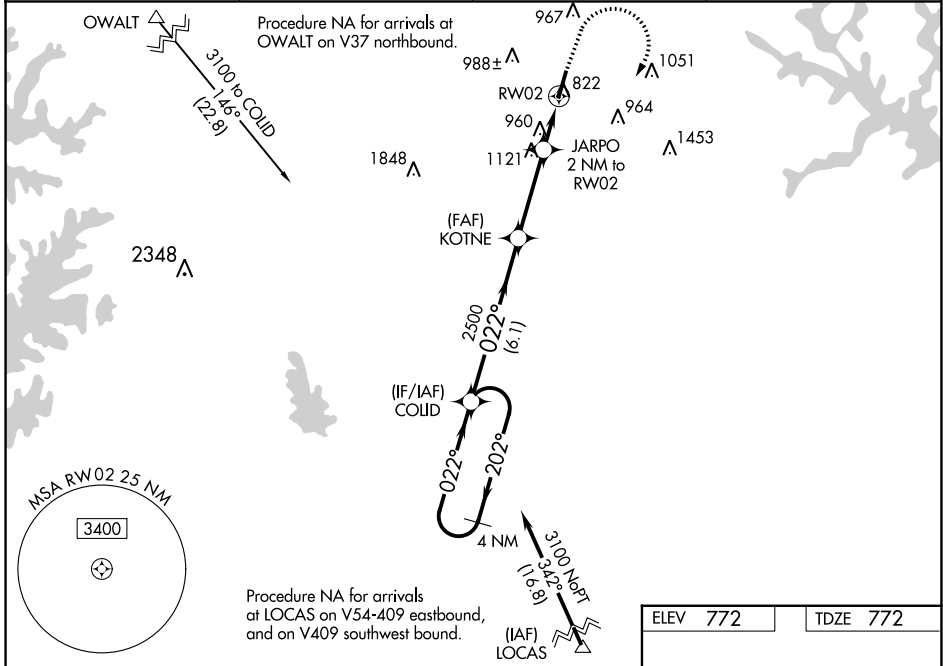
WAAS CH <b>40321</b> <b>W02A</b>	APP CRS <b>022°</b>	Rwy Idg TDZE Apt Elev	<b>5375</b> <b>772</b> <b>772</b>
----------------------------------------	------------------------	-----------------------------	-----------------------------------------

# RNAV (GPS) RWY 2

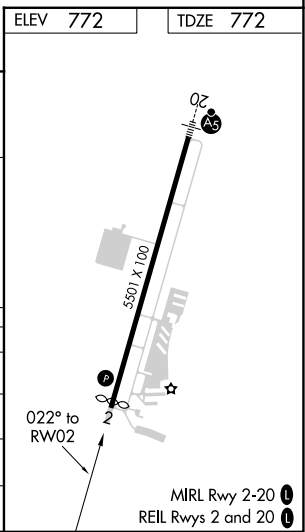
MID-CAROLINA RGNL (RUQ)

RNP APCH.		MISSED APPROACH: Climb to 1500 then climbing right turn to 3100 direct COLID and hold.
For uncompensated Baro-VNAV systems, LNAV/VNAV NA below -16°C or above 54°C. Rwy 2 helicopter visibility reduction below ¾ SM NA.		

AWOS-3 <b>118.175</b>	CHARLOTTE APP CON <b>128.325 307.8</b>	CLNC DEL <b>127.35</b>	UNICOM <b>122.725</b> (CTAF) <b>0</b>
--------------------------	-------------------------------------------	---------------------------	------------------------------------------



CATEGORY	A	B	C	D
LPV DA		1138-1	366 (400-1)	
LNAV/VNAV DA		1181-1½	409 (500-1½)	
LNAV MDA	1220-1	448 (500-1)	1220-1¾	448 (500-1¾)
<b>C</b> CIRCLING	1220-1 448 (500-1)	1260-1 488 (500-1)	1440-1¾ 668 (700-1¾)	1440-2 668 (700-2)



SE-2, 23 MAR 2023 to 20 APR 2023

SE-2, 23 MAR 2023 to 20 APR 2023