

LOC I-RUQ <b>109.95</b>	APP CRS <b>202°</b>	Rwy Idg TDZE Apt Elev	<b>5501</b> <b>772</b> <b>772</b>
----------------------------	------------------------	-----------------------------	---

# ILS or LOC RWY 20

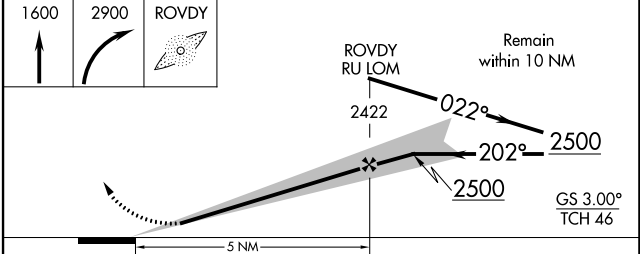
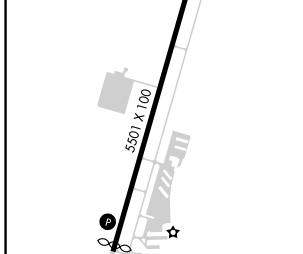
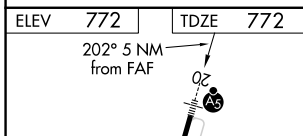
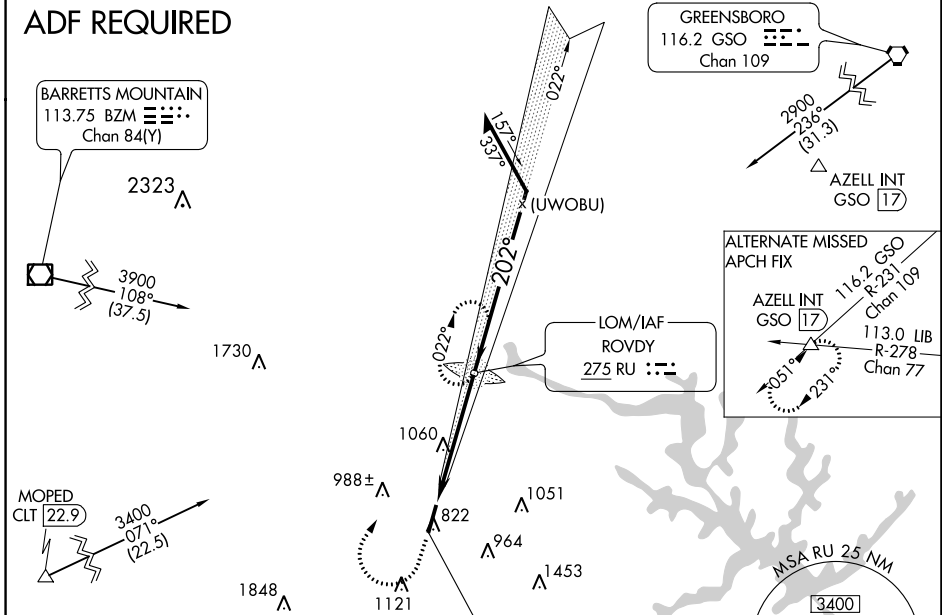
MID-CAROLINA RGNL (RUQ)

**ADF REQUIRED.** When local altimeter setting not received, use Lexington altimeter setting and increase all DA 37 feet and all MDA 40 feet; increase S-LOC Cats C/D visibility 1/8 SM and Circling Cat D visibility 1/4 SM. For inop ALS when using Lexington altimeter setting, increase S-LOC 20 Cats C and D visibility to 1/4 mile.

**MALSR**  
MISSED APPROACH: Climb to 1600 then climbing right turn to 2900 direct ROVDY LOM and hold.

AWOS-3 <b>118.175</b>	CHARLOTTE APP CON <b>128.325 307.8</b>	CLNC DEL <b>127.35</b>	UNICOM <b>122.725 (CTAF)</b>
--------------------------	---	---------------------------	---------------------------------

## ADF REQUIRED



CATEGORY	A	B	C	D
S-ILS 20	972-1/2		200 (200-1/2)	
S-LOC 20	1360-1/2 588 (600-1/2)		1360-1/4 588 (600-1/4)	
<input checked="" type="checkbox"/> CIRCLING	1360-1 588 (600-1)		1440-1 668 (700-1/4) 1440-2 668 (700-2)	

SE-2, 23 MAR 2023 to 20 APR 2023

SE-2, 23 MAR 2023 to 20 APR 2023