

(ZETTR3.ZETTR) 19339

ZETTR THREE DEPARTURE (RNAV)

AL-5506 (FAA)

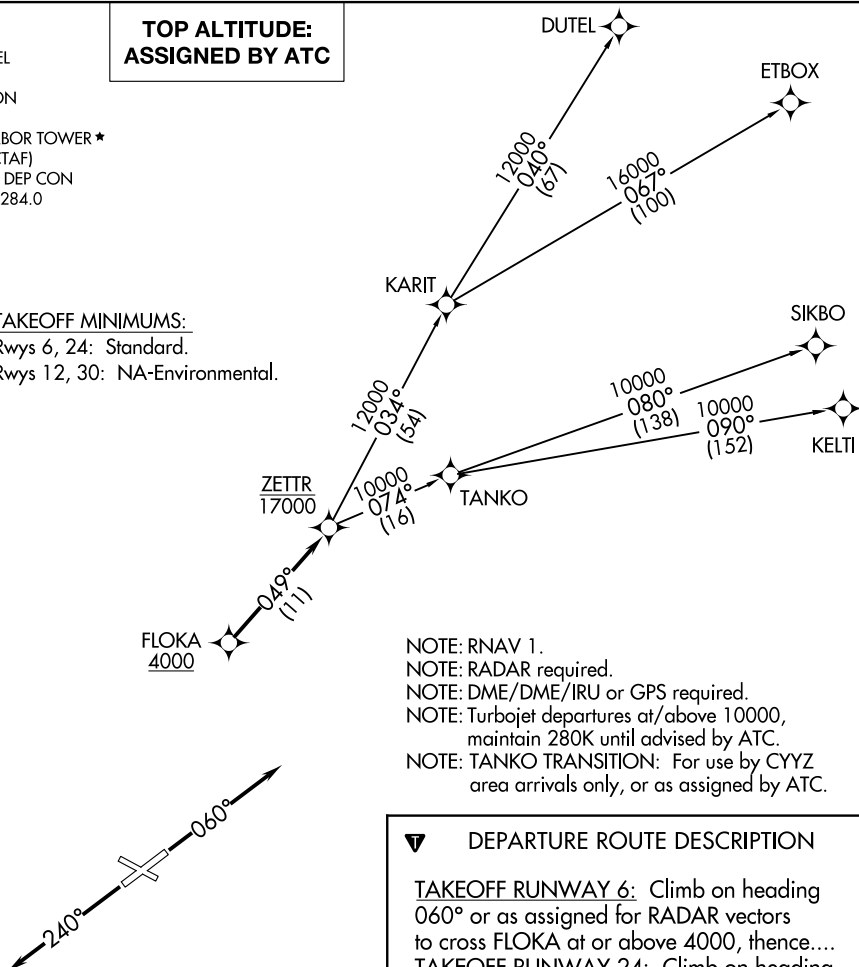
ANN ARBOR MUNI (ARB)

ANN ARBOR, MICHIGAN

ATIS
 134.55
 CLNC DEL
 121.6
 GND CON
 121.6
 ANN ARBOR TOWER ★
 120.3 (CTAF)
 DETROIT DEP CON
 118.95 284.0

**TOP ALTITUDE:
ASSIGNED BY ATC**

TAKEOFF MINIMUMS:
 Rwy 6, 24: Standard.
 Rwy 12, 30: NA-Environmental.



- NOTE: RNAV 1.
- NOTE: RADAR required.
- NOTE: DME/DME/IRU or GPS required.
- NOTE: Turbojet departures at/above 10000, maintain 280K until advised by ATC.
- NOTE: TANKO TRANSITION: For use by CYYZ area arrivals only, or as assigned by ATC.

DEPARTURE ROUTE DESCRIPTION

TAKEOFF RUNWAY 6: Climb on heading 060° or as assigned for RADAR vectors to cross FLOKA at or above 4000, thence....
TAKEOFF RUNWAY 24: Climb on heading 240° or as assigned for RADAR vectors to cross FLOKA at or above 4000, thence....

....on track 049° to cross ZETTR at or below 17000, then on (transition). Maintain ATC assigned altitude, expect filed altitude 10 minutes after departure.

- DUTEL TRANSITION (ZETTR3.DUTEL):**
- ETBOX TRANSITION (ZETTR3.ETBOX):**
- KELTI TRANSITION (ZETTR3.KELTI):**
- SIKBO TRANSITION (ZETTR3.SIKBO):**
- TANKO TRANSITION (ZETTR3.TANKO):**

NOTE: Chart not to scale.

ZETTR THREE DEPARTURE (RNAV)

(ZETTR3.ZETTR) 05DEC19

ANN ARBOR, MICHIGAN
ANN ARBOR MUNI (ARB)

EC-1, 23 MAR 2023 to 20 APR 2023

EC-1, 23 MAR 2023 to 20 APR 2023