

METRO THREE DEPARTURE

AL-5506 (FAA)

ANN ARBOR MUNI (ARB)

ANN ARBOR, MICHIGAN

TOP ALTITUDE:
3000

EC-1, 23 MAR 2023 to 20 APR 2023

ATIS 134.55
CLNC DEL 121.6
GND CON 121.6
ANN ARBOR TOWER ★
120.3 (CTAF)
DETROIT DEP CON
118.95 284.0

TAKEOFF MINIMUMS

Rwys 12, 30: NA - Environmental.
Rwys 6, 24: Standard.

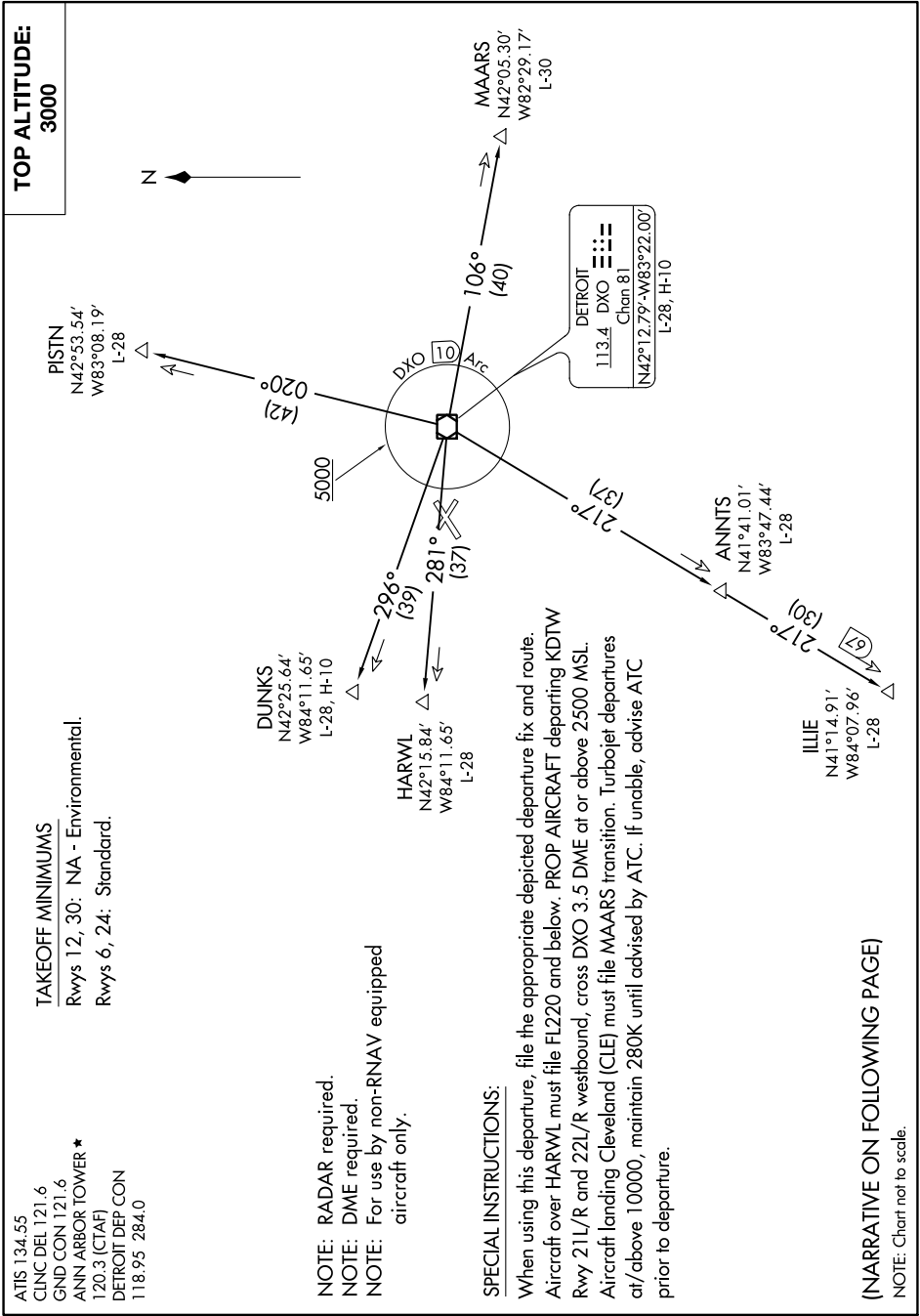
NOTE: RADAR required.
NOTE: DME required.
NOTE: For use by non-RNAV equipped aircraft only.

SPECIAL INSTRUCTIONS:

When using this departure, file the appropriate depicted departure fix and route. Aircraft over HARWL must file FL220 and below. PROP AIRCRAFT departing KDTW Rwy 21L/R and 22L/R westbound, cross DXO 3.5 DME at or above 2500 MSL. Aircraft landing Cleveland (CLE) must file MAARS transition. Turbojet departures at/above 10000, maintain 280K until advised by ATC. If unable, advise ATC prior to departure.

(NARRATIVE ON FOLLOWING PAGE)

NOTE: Chart not to scale.



EC-1, 23 MAR 2023 to 20 APR 2023

METRO THREE DEPARTURE