

WAAS CH <b>82704</b> <b>W35A</b>	APP CRS <b>348°</b>	Rwy ldg <b>5010</b> TDZE <b>951</b> Apt Elev <b>951</b>
--	------------------------	---

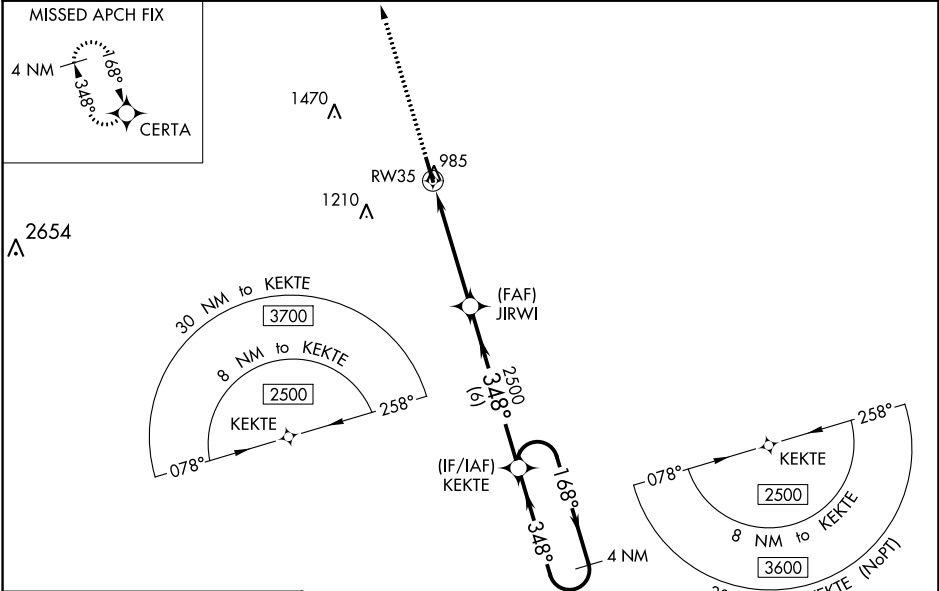
# RNAV (GPS) RWY 35

JACKSON COUNTY (JCA)

**⚠** For uncompensated Baro-VNAV systems, LNAV/VNAV NA below -16°C (4°F) or above 54°C (130°F). Circling NA for Cat D west of Rwy 17-35. Baro-VNAV and VDP NA when using Winder altimeter setting. DME/DME RNP-0.3 NA. Helicopter visibility reduction below ¾ SM NA. When local altimeter setting not received, use Winder altimeter setting: increase LPV DA to 1232 feet and LNAV/VNAV DA to 1241 feet and all MDA 40 feet; increase LPV visibility all Cats, LNAV/VNAV visibility all Cats, and LNAV Cat C/D visibility ¼ mile; increase Circling Cat C visibility ¼ mile.

**MISSED APPROACH:**  
Climb to 3700 direct  
CERTA and hold.

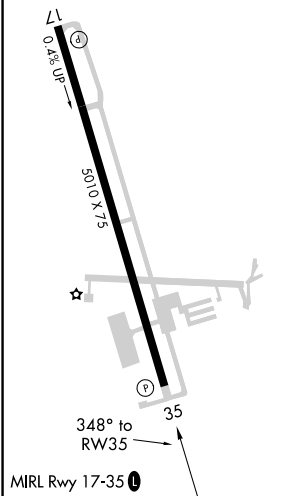
AWOS-3PT <b>118.125</b>	ATLANTA APP CON * <b>132.475 291.1</b>	UNICOM <b>122.975 (CTAF) ①</b>
----------------------------	---	-----------------------------------



SE-4, 23 MAR 2023 to 20 APR 2023

SE-4, 23 MAR 2023 to 20 APR 2023

ELEV <b>951</b>	TDZE <b>951</b>
-----------------	-----------------



3700	CERTA	4 NM Holding Pattern			
* LNAV only	* 1.1 NM to RW35	JIRWI 2500	KEKTE	2500	GP 3.00° TCH 54
		← 348°	← 348°	← 168°	
		← 2500			
		← 6 NM			
		← 3.6 NM			
		← 1.1 NM			
CATEGORY	A	B	C	D	
LPV DA		1201-¾	250 (300-¾)		
LNAV/VNAV DA		1210-¾	259 (300-¾)		
LNAV MDA	1340-1	389 (400-1)	1340-1½	389 (400-1½)	
<b>C</b> CIRCLING	1440-1	489 (500-1)	1520-1½ 569 (600-1½)	1520-2 569 (600-2)	