

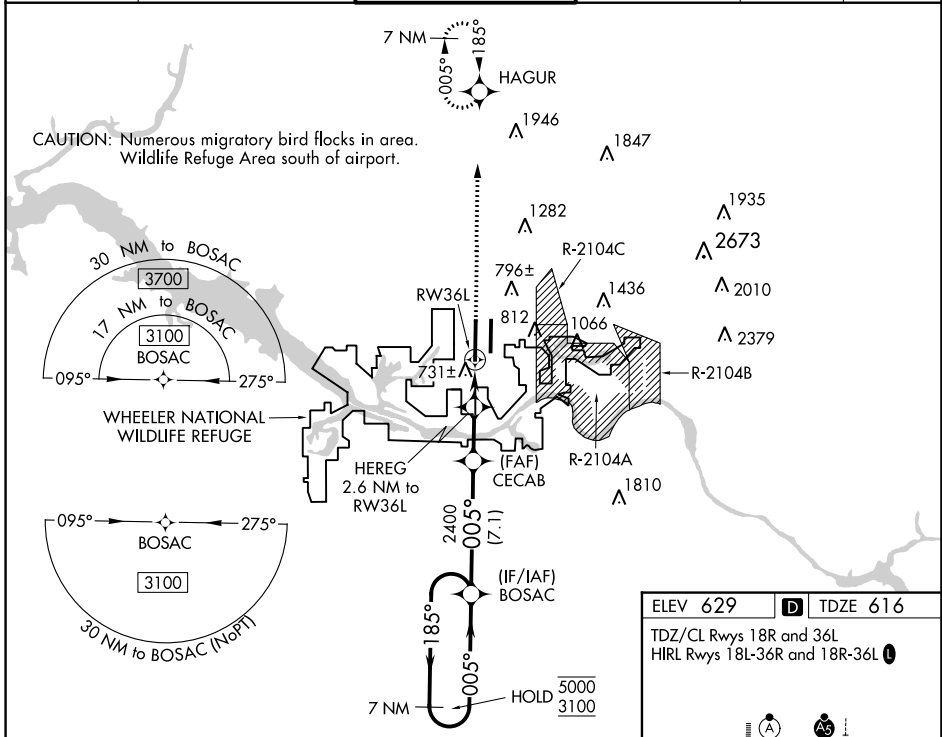
WAAS CH 82606 W36A	APP CRS 005°	Rwy Idg 12600 TDZE 616 Apt Elev 629
--	------------------------	--

RNAV (GPS) RWY 36L

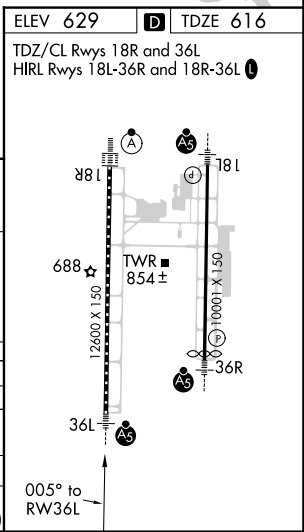
HUNTSVILLE INTL-CARL T JONES FLD (HSV)

RNP APCH-GPS.		MALSR		MISSED APPROACH: Climb to 3000 direct HAGUR and hold.	
<p>ASR Circling NA for Cats C/D/E east of Rwy 18L-36R. Simultaneous approach authorized. LNAV procedure NA during simultaneous operations. Use of FD or AP required during simultaneous operations. For uncompensated Baro-VNAV systems, LNAV/VNAV NA below -8°C or above 54°C. For inop ALS, increase LPV Cat E visibility to RVR 4000, LNAV/VNAV all Cats visibility to RVR 4500, and LNAV Cat E visibility to RVR 6000.</p>					

ATIS 121.25	HUNTSVILLE APP CON * 125.6 354.1	HUNTSVILLE TOWER * 127.6 (CTAF) 350.35	GND CON 121.9 269.525	CLNC DEL 120.35	UNICOM 122.95
-----------------------	--	--	---------------------------------	---------------------------	-------------------------



7 NM Holding Pattern		CECAB		3000 HAGUR	
5000	← 185°	2400	HEREG 2.6 NM to RWY36L	↑	3000
3100	→ 005°	1480	1.1 NM to RWY36L	↗	↗
GP 3.00° TCH 53		2400		RWY36L	
		7.1 NM	2.9 NM	1.5 NM	1.1 NM
CATEGORY	A	B	C	D	E
LPV DA	816/18		200 (200-½)		
LNAV/VNAV DA	892/24		276 (300-½)		
LNAV MDA	1000/24	384 (400-½)		1000/35 384 (400-¾)	
CIRCLING	1160-1	531 (600-1)	1160-1½ 531 (600-1½)	1240-2 611 (700-2)	1260-2¼ 631 (700-2¼)



SE-4, 23 MAR 2023 to 20 APR 2023

SE-4, 23 MAR 2023 to 20 APR 2023