

APP CRS	Rwy Idg	4440
146°	TDZE	721
	Apt Elev	742

RNAV (GPS) RWY 15

KENOSHA RGNL (ENW)

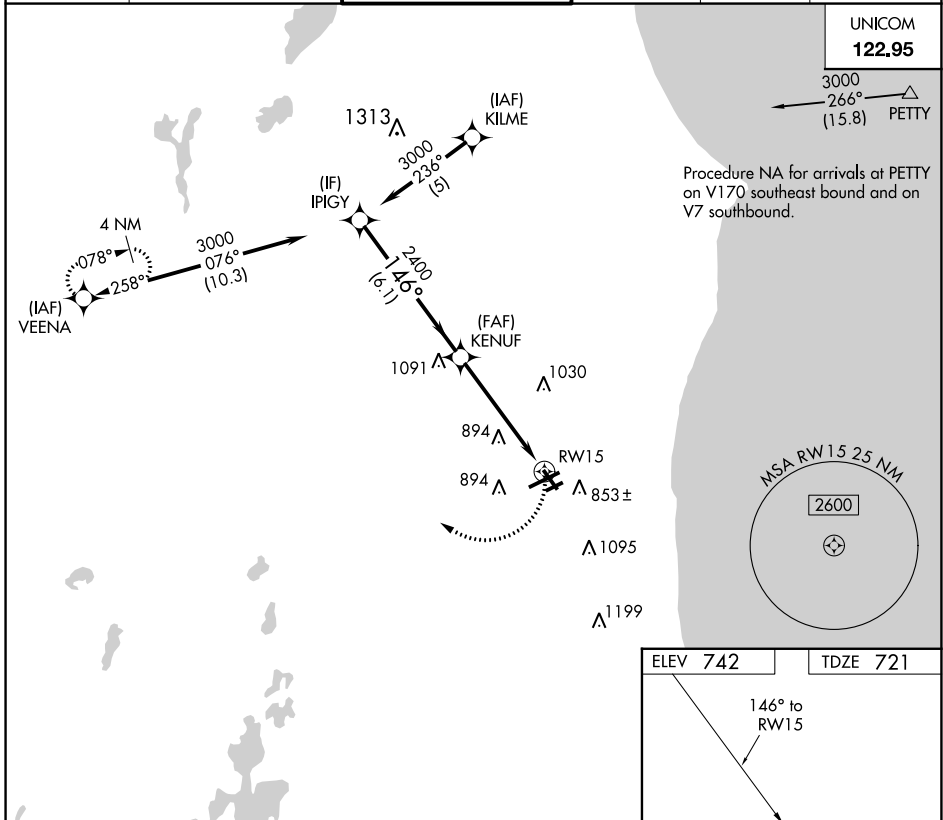
RNP APCH.

▼ Rwy 15 helicopter visibility reduction below 1 SM NA. Straight-In and
▲ Circling Rwy 15 NA at night, Circling Rwy 7R NA at night.

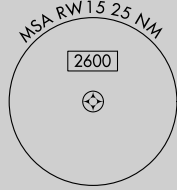
MISSED APPROACH:
 Climbing right turn to 3000
 direct VEENA and hold.

ATIS 127.175	MILWAUKEE APP CON 135.875 317.725	KENOSHA TOWER * 118.6 (CTAF) 0 353.6	GND CON 121.875	CLNC DEL 121.875	CLNC DEL 118.6 (When twr closed)
------------------------	---	--	---------------------------	----------------------------	---

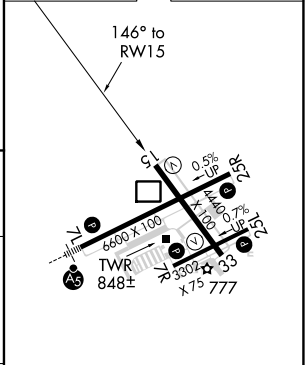
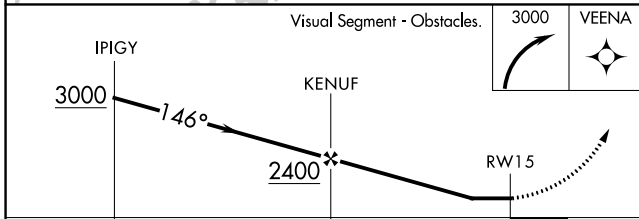
UNICOM
122.95



Procedure NA for arrivals at PETTY
 on V170 southeast bound and on
 V7 southbound.



ELEV 742	TDZE 721
----------	----------



CATEGORY	A		B		C		D	
	6.1 NM		5.1 NM					
LNVA MDA	1200-1	479 (500-1)	1200-1 ³ / ₈	479 (500-1 ³ / ₈)	1200-1 ¹ / ₂	479 (500-1 ¹ / ₂)	1200-1 ¹ / ₂	479 (500-1 ¹ / ₂)
CIRCLING	1200-1	1340-1	1400-1 ³ / ₄	1400-1 ³ / ₄	1440-2 ¹ / ₄	1440-2 ¹ / ₄	1440-2 ¹ / ₄	1440-2 ¹ / ₄
	458 (500-1)	598 (600-1)	658 (700-1 ³ / ₄)	658 (700-1 ³ / ₄)	698 (700-2 ¹ / ₄)	698 (700-2 ¹ / ₄)	698 (700-2 ¹ / ₄)	698 (700-2 ¹ / ₄)

MIRL Rwy 7R-25L
 HIRL Rwy 7L-25R and 15-33
 REIL Rwy 25R

EC-3, 23 MAR 2023 to 20 APR 2023

EC-3, 23 MAR 2023 to 20 APR 2023