

LOC I-ENW 109.35	APP CRS 068°	Rwy ldg 6600
		TDZE 742
		Apt Elev 742

ILS or LOC RWY 7L

KENOSHA RGNL (ENW)

DME required for LOC only. RNAV 1-GPS required.

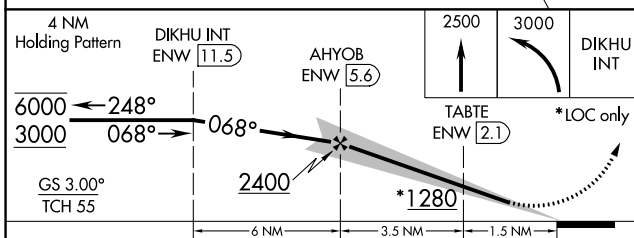
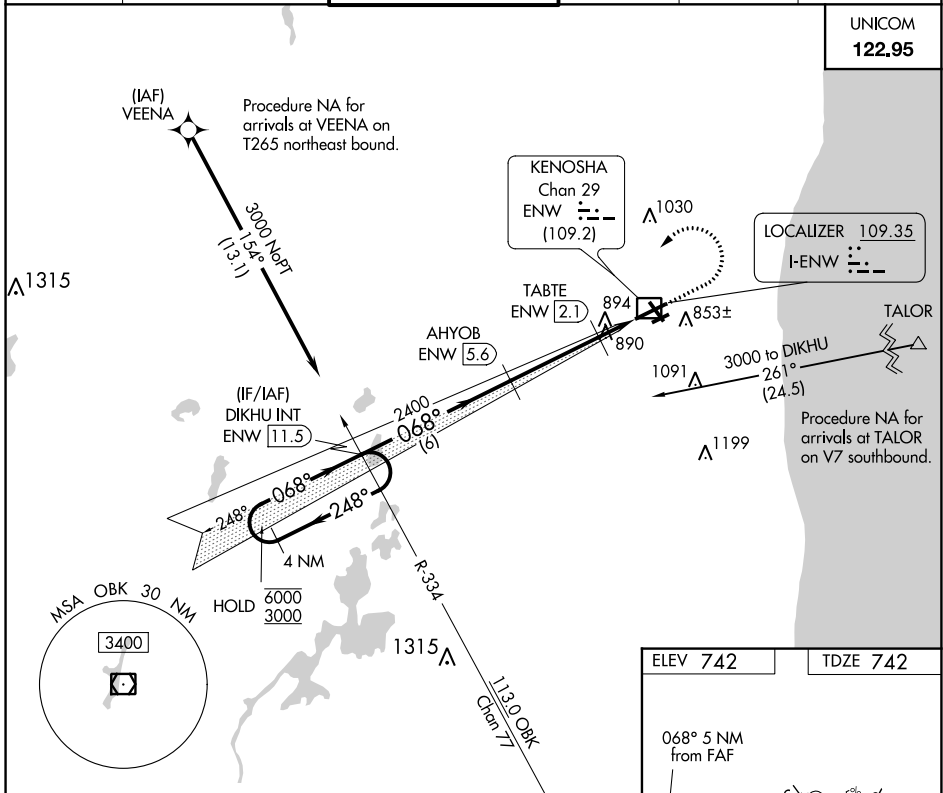
⚠ Circling Rwy 7R, 15 NA at night.



MISSED APPROACH: Climb to 2500 then climbing left turn to 3000 direct DIKHU and hold.

ATIS 127.175	MILWAUKEE APP CON 135.875 317.725	KENOSHA TOWER * 118.6 (CTAF) 0 353.6	GND CON 121.875	CLNC DEL 121.875	CLNC DEL 118.6 (When twr closed)
------------------------	---	--	---------------------------	----------------------------	---

UNICOM
122.95



ELEV 742	TDZE 742
----------	----------

068° 5 NM from FAF

51

0.5% UP

0.5% DOWN

6600 x 100

TWR 848±

3302

33

x 75 777

MIRL Rwy 7R-25L	1
HIRL Rwy 7L-25R and 15-33	1
REIL Rwy 25R	1

FAF to MAP 5 NM

Knots	60	90	120	150	180
Min:Sec	5:00	3:20	2:30	2:00	1:40

CATEGORY	A	B	C	D
S-ILS 7L	942-1/2 200 (200-1/2)			
S-LOC 7L	1140-1/2	398 (400-1/2)	1140-3/4	398 (400-3/4)
C CIRCLING	1200-1 458 (500-1)	1340-1 598 (600-1)	1400-1 3/4 658 (700-1 3/4)	1440-2 1/4 698 (700-2 1/4)

EC-3, 23 MAR 2023 to 20 APR 2023

EC-3, 23 MAR 2023 to 20 APR 2023