

| | | | |
|--|------------------------|---|-------------|
| WAAS CH 53523 W04A | APP CRS 043° | Rwy Idg TDZE 647 Apt Elev 650 | 5104 |
|--|------------------------|---|-------------|

RNAV (GPS) RWY 4

ST CLAIR COUNTY INTL (PHN)

RNP APCH.

⚠ Circling Rwy 10, 22, 28 NA at night. For uncompensated Baro-VNAV systems, LNAV/VNAV NA below -16°C or above 54°C. For inoperative ALS, increase LNAV/VNAV all Cats visibility to ¾ mile and LNAV Cat C/D visibility to 1 SM.

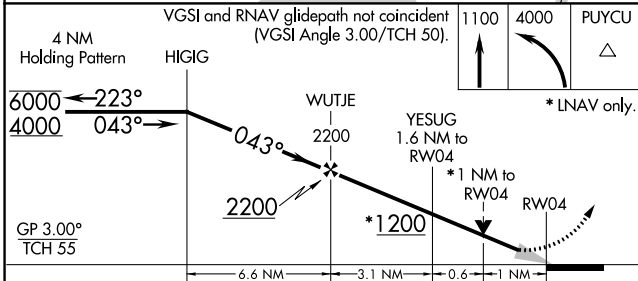
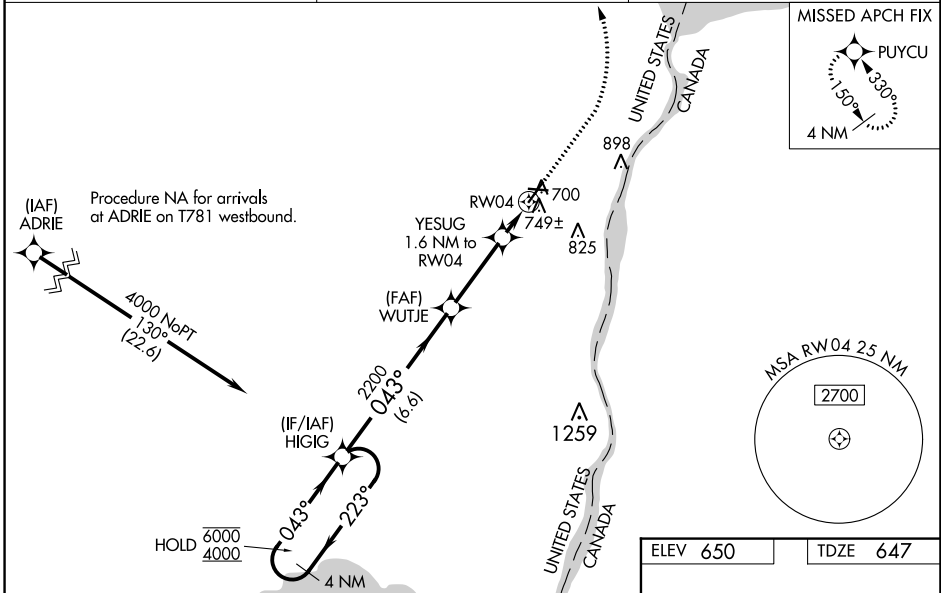
MALSRL

MISSED APPROACH:
Climb to 1100 then climbing left turn to 4000 direct PUYCU and hold, continue climb-in-hold to 4000.

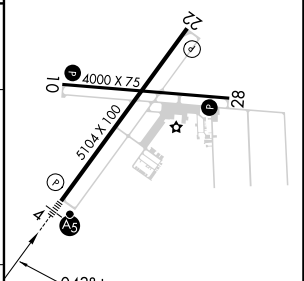
AWOS-3
118.375

SELFRIDGE APP CON *
119.6 391.9

UNICOM
123.05 (CTAF)



| | |
|----------|----------|
| ELEV 650 | TDZE 647 |
|----------|----------|



| CATEGORY | A | B | C | D |
|-------------------|--------------------|---|---|---|
| LPV DA | 847-½ | | 200 (200-½) | |
| LNAV/VNAV DA | 930-½ | | 283 (300-½) | |
| LNAV MDA | 1000-½ 353 (400-½) | | 1000-5/8 353 (400-5/8) | |
| C CIRCLING | 1160-1 510 (600-1) | | 1260-1¾ 610 (700-1¾) 1260-2 610 (700-2) | |

HIRL Rwy 4-22 **1**
MIRL Rwy 10-28 **1**
REIL Rws 10, 22, and 28 **1**

EC-1, 23 MAR 2023 to 20 APR 2023

EC-1, 23 MAR 2023 to 20 APR 2023