

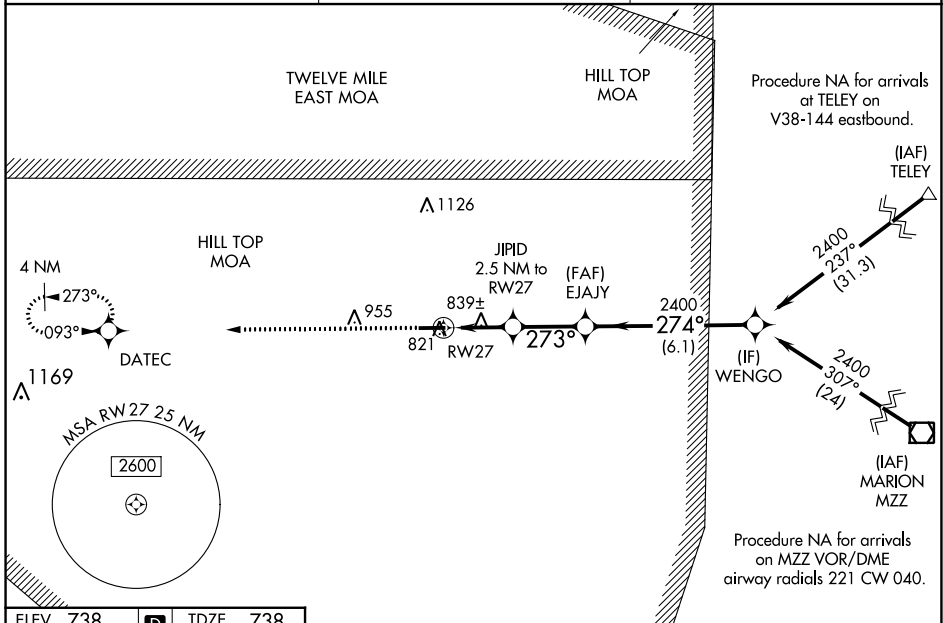
WAAS CH <b>70703</b> <b>W27A</b>	APP CRS <b>273°</b>	Rwy Idg TDZE Apt Elev	<b>5001</b> <b>738</b> <b>738</b>
--	------------------------	-----------------------------	---

**RNAV (GPS) RWY 27**  
LOGANSPORT/CASS COUNTY (GGP)

**▽** Baro-VNAV NA when using Grissom ARB altimeter setting. For uncompensated Baro-VNAV systems, LNAV/VNAV NA below -16°C (4°F) or above 39°C (102°F). DME/DME RNP-0.3 NA.  
**△ NA** VDP NA with Grissom ARB altimeter setting. When local altimeter setting not received, use Grissom ARB altimeter setting; increase LPV DA to 974 feet; increase LNAV/VNAV DA to 1056 feet and all visibilities ½ SM; increase all MDAs 40 feet and Circling visibility Cat D ½ SM.

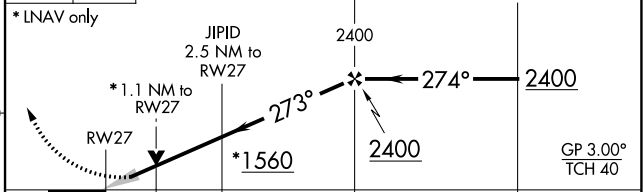
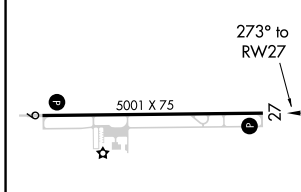
MISSED APPROACH: Climb to 2500 direct DATEC and hold.

AWOS-3P <b>118.5</b>	GRISSOM APP CON★ <b>121.05 338.275</b>	UNICOM <b>122.8 (CTAF) 0</b>
-------------------------	---	---------------------------------



ELEV <b>738</b>	<b>D</b>	TDZE <b>738</b>
-----------------	----------	-----------------

2500 DATEC  
 ↑ VGS1 and RNAV glidepath not coincident (VGS1 Angle 3.00/TCH 25).  
 \* LNAV only



CATEGORY	A	B	C	D
LPV DA		938-¾	200 (200-¾)	
LNAV/VNAV DA		1020-⅞	282 (300-⅞)	
LNAV MDA		1100-1	362 (400-1)	
CIRCLING	1180-1	1200-1	1280-1½	1400-2
	442 (500-1)	462 (500-1)	542 (600-1½)	662 (700-2)

MIRL Rwy 9-27 **0**  
 REIL Rwy 9 and 27 **0**

EC-2, 23 MAR 2023 to 20 APR 2023

EC-2, 23 MAR 2023 to 20 APR 2023