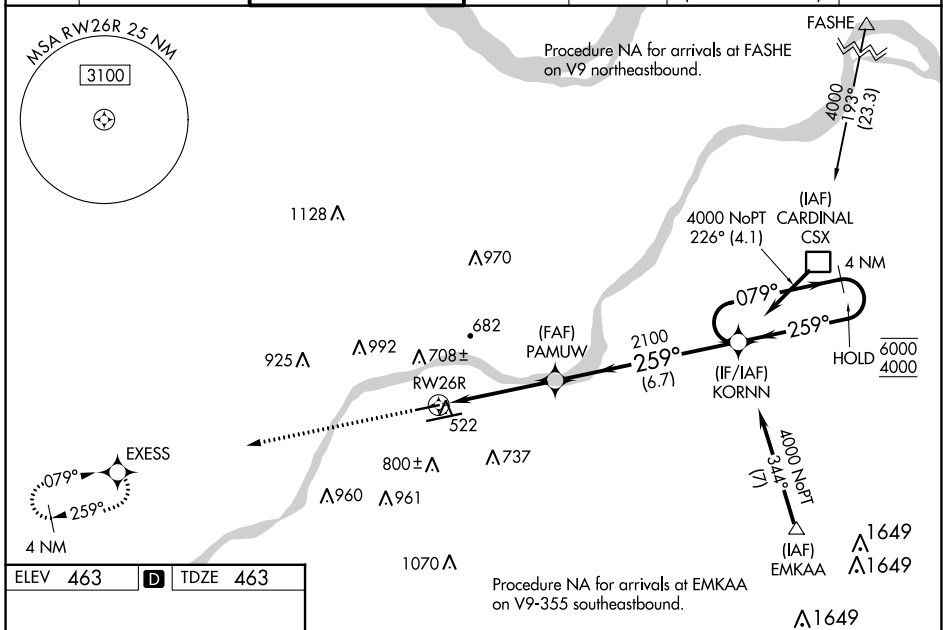


WAAS CH <b>97414</b> <b>W26A</b>	APP CRS <b>259°</b>	Rwy Idg TDZE <b>463</b> Apt Elev <b>463</b>	<b>5000</b> <b>463</b> <b>463</b>
--	------------------------	---	---

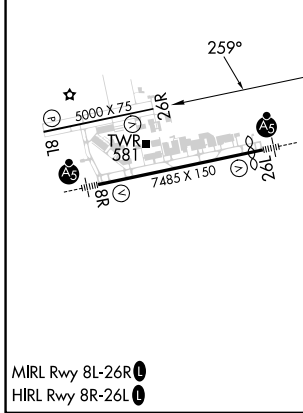
# RNAV (GPS) RWY 26R

SPIRIT OF ST LOUIS (SUS)

RNP APCH - GPS.						
<p><b>⚠</b> Rwy 26R helicopter visibility reduction below <math>\frac{3}{4}</math> SM NA. For uncompensated Baro-VNAV systems, LNAV/VNAV NA below <math>-18^{\circ}\text{C}</math> or above <math>54^{\circ}\text{C}</math>. VDP and Baro-VNAV NA when using St Louis Lambert Intl altimeter setting. When local altimeter setting not received, use St Louis Lambert Intl altimeter setting and increase LPV DA to 768 feet, LNAV/VNAV DA to 834 feet, and all MDA 60 feet, increase LPV and LNAV/VNAV all Cats visibility <math>\frac{1}{8}</math> mile.</p>				<p>MISSED APPROACH: Climb to 3000 direct EXCESS and hold.</p>		
ATIS <b>134.8</b>	ST. LOUIS APP CON <b>126.5 254.3</b>	SPIRIT TOWER* <b>124.75 (CTAF) 0 257.2</b>	GND CON <b>121.7</b>	CLNC DEL <b>133.1</b>	ST. LOUIS CLNC DEL <b>121.7</b> (when tower closed)	UNICOM <b>122.95</b>



ELEV <b>463</b>	<b>D</b>	TDZE <b>463</b>
-----------------	----------	-----------------



3000	EXCESS	KORNN	4 NM Holding Pattern
*LNAV only	PAMUW	2100	079° → 6000 ← 259° 4000
RW26R	*1.2 NM to RW26R	2100	GP 3.50° TCH 47
1.2 NM	3.1 NM	6.7 NM	

CATEGORY	A	B	C	D
LPV DA	713- $\frac{3}{4}$	250 (300- $\frac{3}{4}$ )		NA
LNAV/VNAV DA	780- $\frac{7}{8}$	317 (400- $\frac{7}{8}$ )		NA
LNAV MDA	940-1	477 (500-1)		NA
CIRCLING	1100-1 637 (700-1)	1140-1 677 (700-1)		NA