


| | | | |
|--|------------------------|---|-------------|
| WAAS CH 81914 W26B | APP CRS 259° | Rwy Idg TDZE 462 Apt Elev 463 | 7004 |
|--|------------------------|---|-------------|

RNAV (GPS) RWY 26L

SPIRIT OF ST LOUIS (SUS)

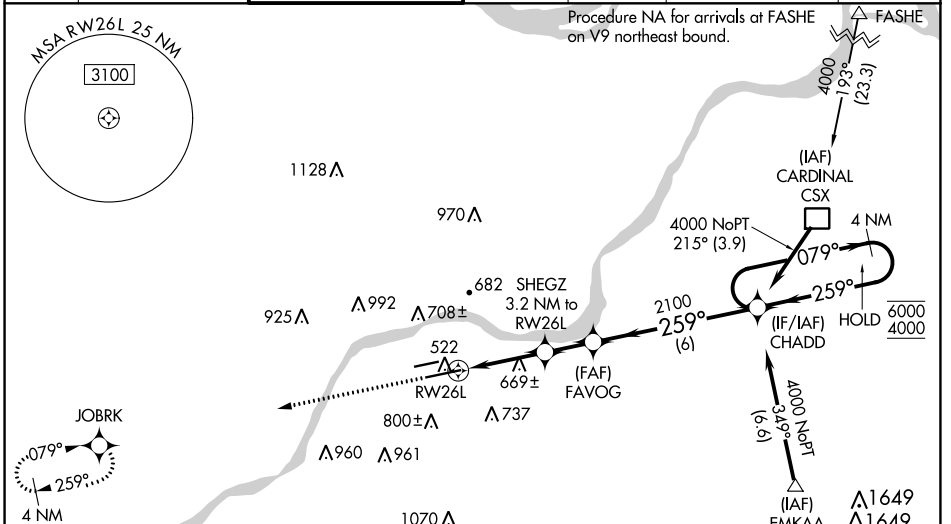
RNP APCH.

⚠ For uncompensated Baro-VNAV systems, LNAV/VNAV NA below -18°C or above 54°C. Baro-VNAV and VDP NA when using St. Louis Lambert Intl altimeter setting. When local altimeter setting not received, use St. Louis Lambert Intl altimeter setting and increase all DA 57 feet, all MDA 60 feet, increase LNAV/VNAV visibility all Cats, and LNAV Cats C/D visibility to RVR 5500. For inop ALS when using St. Louis Lambert Intl altimeter setting, increase LNAV/VNAV all Cats visibility to 1 3/8 mile and LNAV Cat C/D visibility to 1 3/8 mile. #RVR 1800 authorized with use of FD or AP or HUD to DA, NA when using St. Louis Lambert Intl altimeter setting.

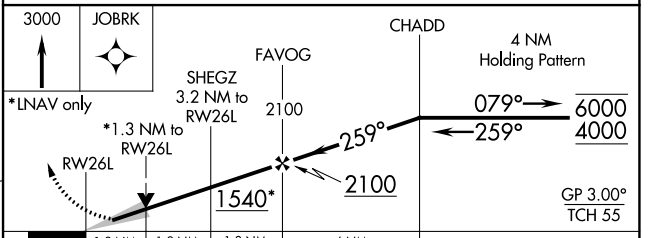
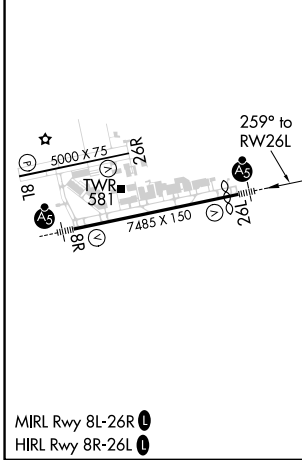
MALSR 

MISSED APPROACH: Climb to 3000 direct JOBRK and hold.

| | | | | | | |
|----------------------|---|---|-------------------------|--------------------------|---|-------------------------|
| ATIS 134.8 | ST. LOUIS APP CON 126.5 254.3 | SPIRIT TOWER* 124.75 (CTAF) 0 257.2 | GND CON 121.7 | CLNC DEL 133.1 | ST. LOUIS CLNC DEL 121.7 (when tower closed) | UNICOM 122.95 |
|----------------------|---|---|-------------------------|--------------------------|---|-------------------------|



| | | |
|-----------------|----------|-----------------|
| ELEV 463 | D | TDZE 462 |
|-----------------|----------|-----------------|



| CATEGORY | A | B | C | D |
|-------------------|-----------------------|-----------------------|-----------------------|-----------------------|
| LPV DA# | 662/24 200 (200-1/2) | | | |
| LNAV/VNAV DA | 916/45 454 (500-7/8) | | | |
| LNAV MDA | 920/24 458 (500-1/2) | 920/45 458 (500-7/8) | | |
| C CIRCLING | 1100-1 637 (700-1) | 1120-1 657 (700-1) | 1140-2 677 (700-2) | 1360-3 897 (900-3) |

NC-3, 23 MAR 2023 to 20 APR 2023

NC-3, 23 MAR 2023 to 20 APR 2023