

LOC/DME I-SQI 111.5 Chan 52	APP CRS 072°	Rwy ldg 6499 TDZE 648 Apt Elev 648
--	------------------------	---

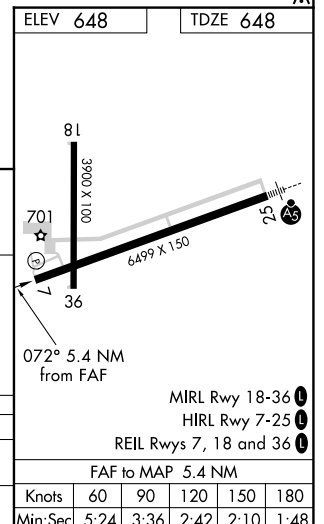
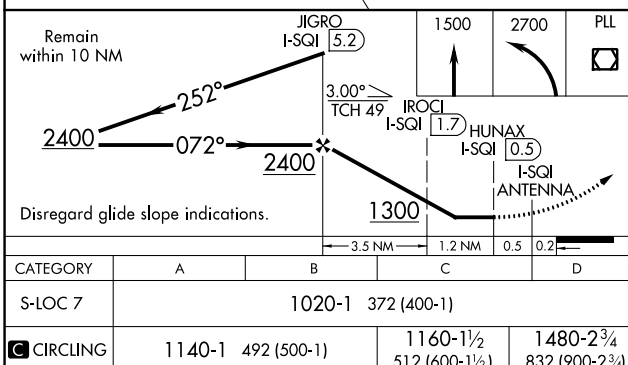
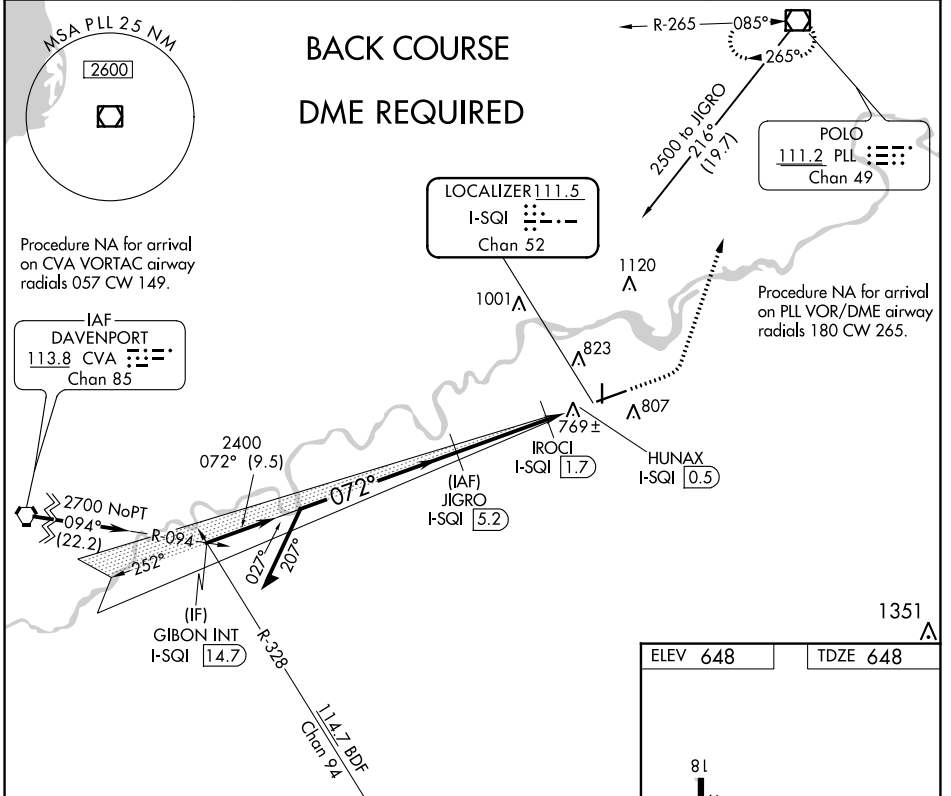
LOC BC RWY 7

WHITESIDE COUNTY/JOS H BITTORF FLD (SQI)

NA Circling Rwy 36 NA at night.
Rwy 7 helicopter visibility reduction below 3/4 SM NA.
DME required.

MISSED APPROACH: Climb to 1500 then climbing left turn to 2700 direct PLL VOR/DME and hold.

AWOS-3PT 119.175	ROCKFORD APP CON 126.0 327.0	CLNC DEL 128.0	UNICOM 123.0 (CTAF)
----------------------------	--	--------------------------	-------------------------------



CATEGORY	A	B	C	D
S-LOC 7	1020-1 372 (400-1)			
CIRCLING	1140-1 492 (500-1)	1160-1 1/2 512 (600-1 1/2)	1480-2 3/4 832 (900-2 3/4)	

EC-3, 23 MAR 2023 to 20 APR 2023

EC-3, 23 MAR 2023 to 20 APR 2023

Knots	60	90	120	150	180
Min:Sec	5:24	3:36	2:42	2:10	1:48