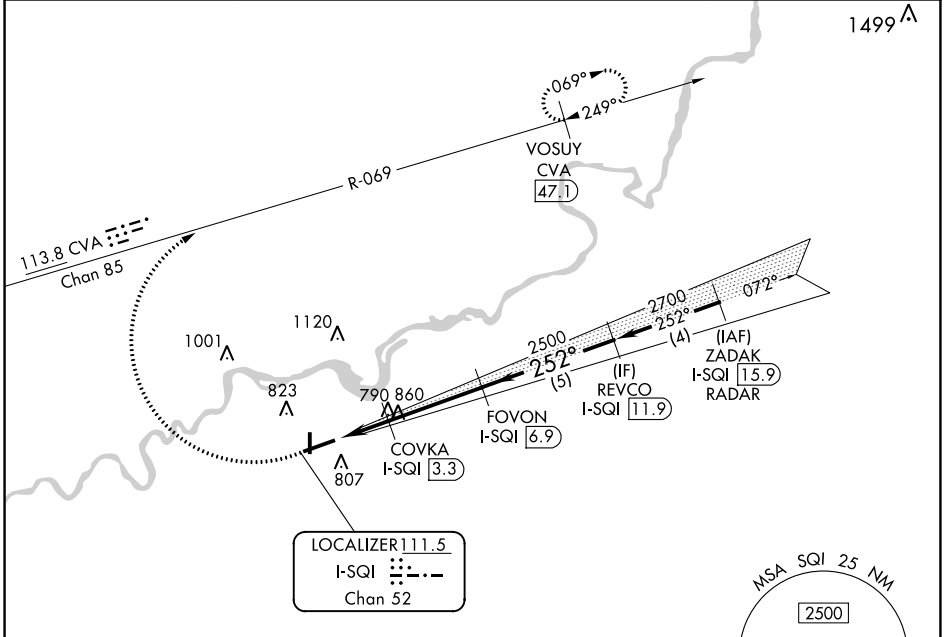


LOC/DME I-SQI 111.5 Chan 52	APP CRS 252°	Rwy Idg 6499	TDZE 647
		Apt Elev 648	

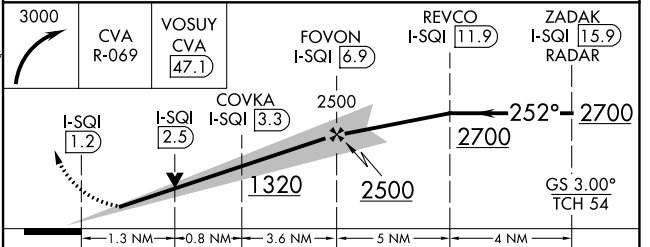
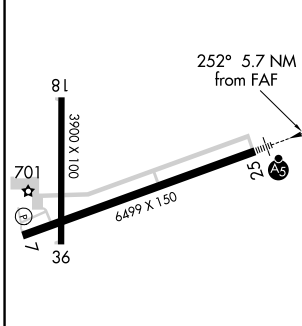
ILS or LOC RWY 25

WHITESIDE COUNTY/JOS H BITTORF FLD (SQI)

DME required. Radar required for procedure entry.		MALSR	MISSED APPROACH: Climbing right turn to 3000 on CVA VORTAC R-069 to VOSUY/CVA 47.1 DME and hold.
AWOS-3PT 119.175	ROCKFORD APP CON 126.0 327.0	CLNC DEL 128.0	UNICOM 123.0 (CTAF) 0



ELEV 648	TDZE 647
----------	----------



CATEGORY	A	B	C	D
S-ILS 25	847-1/2 200 (200-1/2)			
S-LOC 25	1100-1/2 453 (500-1/2)		1100-7/8 453 (500-7/8)	
<input checked="" type="checkbox"/> CIRCLING	1140-1 492 (500-1)		1160-1 1/2 512 (600-1 1/2) 1480-2 3/4 832 (900-2 3/4)	

STERLING/ROCKFALLS, ILLINOIS
Amdt 12 07OCT21

WHITESIDE COUNTY/JOS H BITTORF FLD (SQI)
ILS or LOC RWY 25
41°45'N-89°41'W

EC-3, 23 MAR 2023 to 20 APR 2023

EC-3, 23 MAR 2023 to 20 APR 2023