

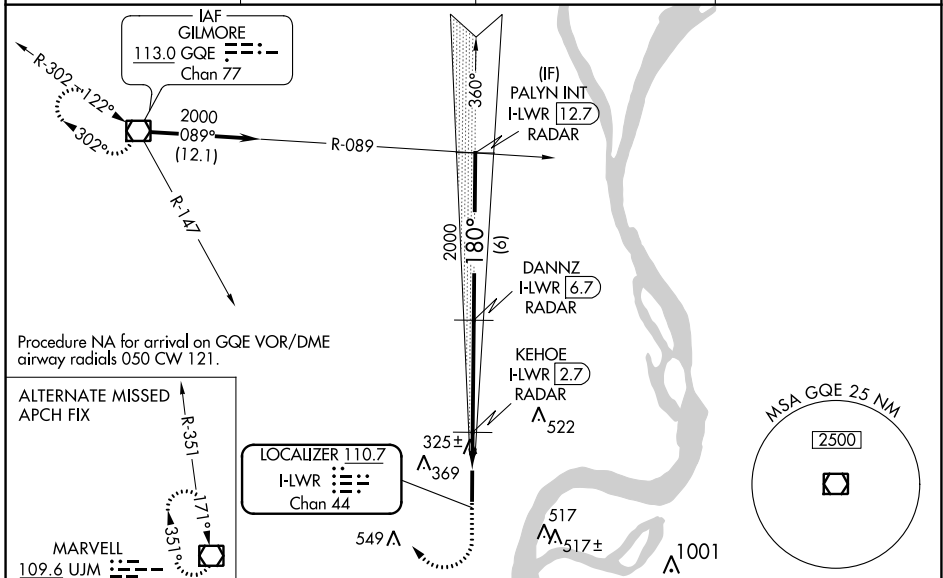
LOC/DME I-LWR 110.7 Chan 44	APP CRS 180°	Rwy Idg 6003 TDZE 213 Apt Elev 213
---	------------------------	---

ILS or LOC RWY 17

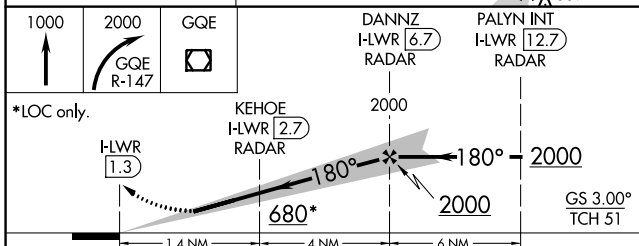
WEST MEMPHIS MUNI (A W M)

DME or RADAR required.	MALSR	MISSED APPROACH: Climb to 1000 then climbing right turn to 2000 on GQE VOR/DME R-147 to GQE VOR/DME and hold.
<p>NA For inop ALS, increase S-LOC 17 Cat C/D visibility to 1 1/2 SM and KEHOE FIX MINIMUMS S-LOC 17 Cats C/D visibility to 1 SM.</p>		

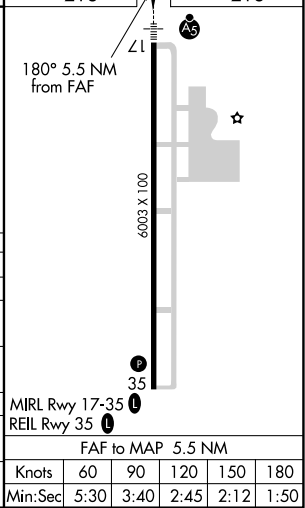
ASOS 118.175	MEMPHIS APP CON 119.1 291.6	CLNC DEL 121.7	UNICOM 123.05 (CTAF) 1
------------------------	---------------------------------------	--------------------------	---



ELEV 213	TDZE 213
----------	----------



CATEGORY	A	B	C	D
S-ILS 17	413-1/2 200 (200-1/2)			
S-LOC 17	680-1/2 467 (500-1/2)			680-1 467 (500-1)
CIRCLING	680-1 467 (500-1)	740-1 527 (600-1)	800-1 1/2 587 (600-1 1/2)	920-2 1/4 707 (800-2 1/4)
KEHOE FIX MINIMUMS				
S-LOC 17	580-1/2 367 (400-1/2)			580-5/8 367 (400-5/8)
CIRCLING	640-1 427 (500-1)	740-1 527 (600-1)	800-1 1/2 587 (600-1 1/2)	920-2 1/4 707 (800-2 1/4)



SC-1, 23 MAR 2023 to 20 APR 2023

SC-1, 23 MAR 2023 to 20 APR 2023

MIRL Rwy 17-35 1				
REIL Rwy 35 1				
FAF to MAP 5.5 NM				
Knots	60	90	120	150 180
Min:Sec	5:30	3:40	2:45	2:12 1:50