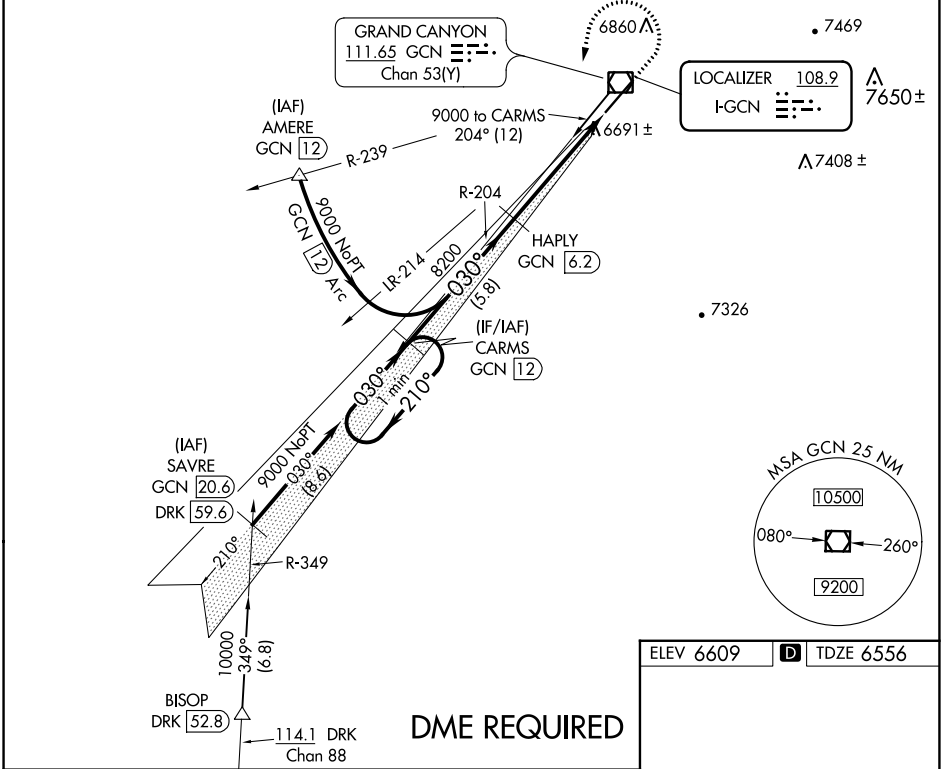


LOC I-GCN <b>108.9</b>	APP CRS <b>030°</b>	Rwy Idg <b>8999</b> TDZE <b>6556</b> Apt Elev <b>6609</b>
---------------------------	------------------------	--

**ILS or LOC RWY 3**  
GRAND CANYON NTL PARK (GCN)

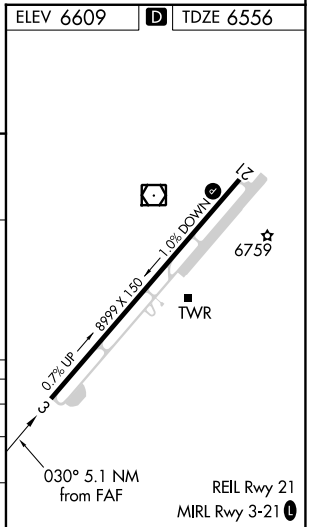
<p><b>∇</b> DME from GCN VOR/DME. Simultaneous reception of I-GCN and GCN DME required. DME required.</p>	<p>MISSED APPROACH: Climb to 7000 then climbing left turn to 9000 on heading 180° and on GCN VOR/DME R-204 direct CARMS/GCN 12 DME and hold.</p>
---	--

ATIS <b>124.3</b>	LOS ANGELES CENTER <b>124.85 319.2</b>	CANYON TOWER* <b>119.0 (CTAF)</b>	GND CON <b>121.9</b>	UNICOM <b>122.95</b>
----------------------	---	--------------------------------------	-------------------------	-------------------------



**DME REQUIRED**

	CARMS GCN (12)	HAPLY GCN (6.2)	GCN R-204	CARMS GCN (12)
One Minute Holding Pattern			7000	
9000	← 210°	→ 030°	hdg 180°	→ 030°
GS 3.00° TCH 58		8200	*GCN (2.3)	*LOC only. GCN (1.2)
	5.8 NM	3.9 NM		1.2 NM
CATEGORY	A	B	C	D
S-ILS 3		6795-¾	239 (200-¾)	
S-LOC 3	6960-1	404 (400-1)	6960-1⅛	404 (400-1⅛)
<b>ⓐ</b> CIRCLING	7140-1 531 (600-1)	7200-1 591 (600-1)	7280-2 671 (700-2)	7620-3 1011 (1100-3)



SW-4, 23 MAR 2023 to 20 APR 2023

SW-4, 23 MAR 2023 to 20 APR 2023