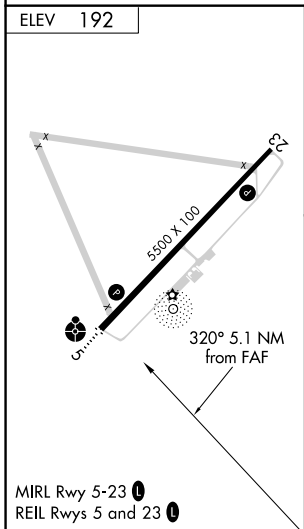
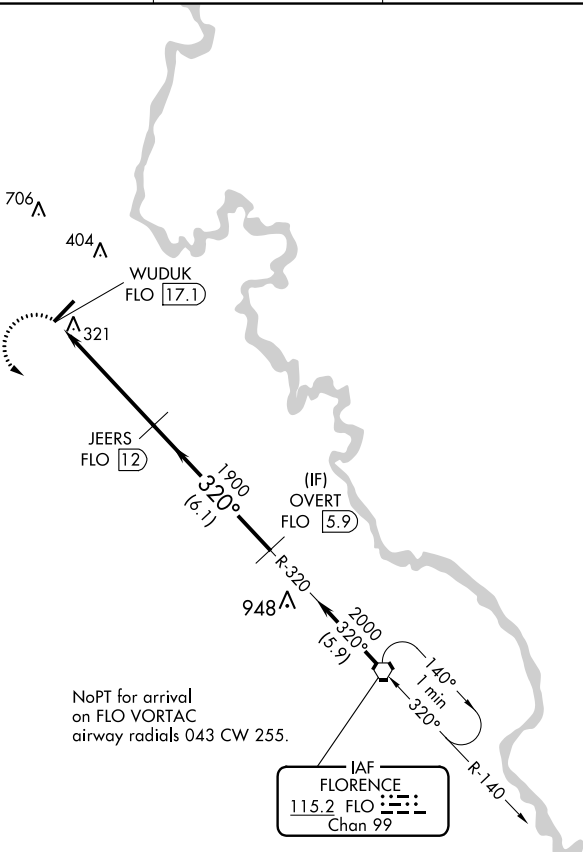
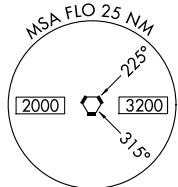


VORTAC FLO 115.2 Chan 99	APP CRS 320°	Rwy Idg TDZE Apt Elev	N/A N/A 192
--	------------------------	-----------------------------	--

VOR-A
DARLINGTON COUNTY (UDG)

DME required.		MISSED APPROACH: Climbing left turn to 2000 direct FLO VORTAC and hold.	
AWOS-3PT 119.925	FLORENCE APP CON * 118.6 341.7	CLNC DEL 118.55	UNICOM 123.0 (CTAF) 0



2000	FLO	OVERT FLO 5.9			
		JEERS FLO 12	2000		
		WUDUK FLO 17.1	1900		
		5.1 NM	6.1 NM		
CATEGORY	A	B	C	D	
CIRCLING	640-1 448 (500-1)	660-1 468 (500-1)	720-1½ 528 (600-1½)	1020-2¾ 828 (900-2¾)	

SE-2, 23 MAR 2023 to 20 APR 2023

SE-2, 23 MAR 2023 to 20 APR 2023