

WAAS CH <b>69630</b> <b>W05A</b>	APP CRS <b>050°</b>	Rwy Idg TDZE <b>3427</b> Apt Elev <b>3443</b>	<b>5005</b>
--	------------------------	---	-------------

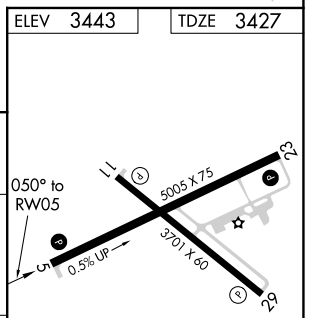
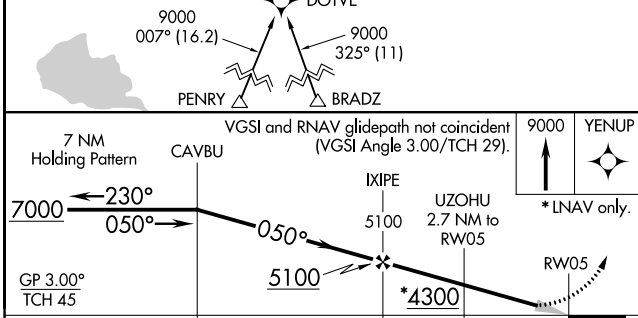
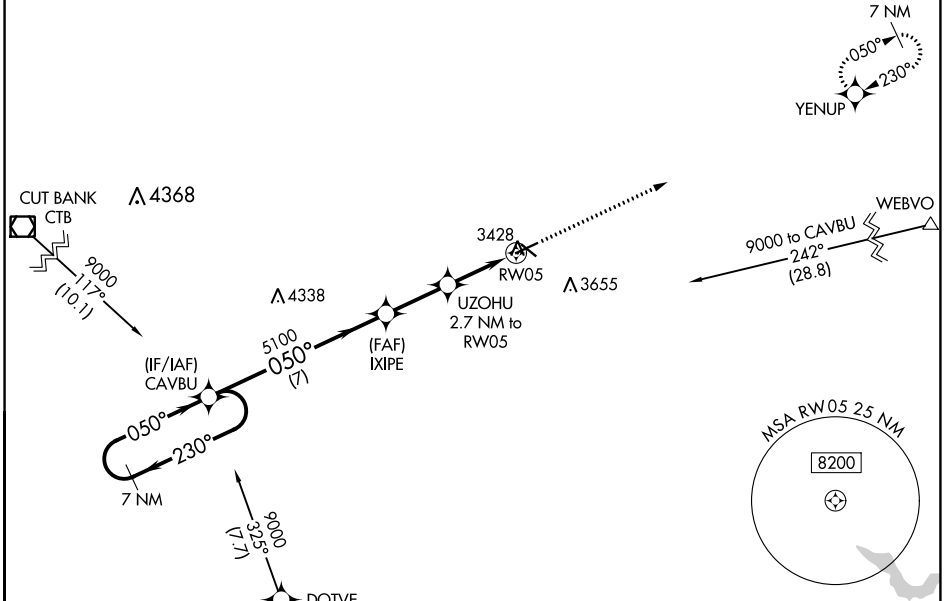
# RNAV (GPS) RWY 5

SHELBY (SBX)

**▼** Night landing: Rwy 23 NA. Baro-VNAV NA. DME/DME RNP-0.3 NA.  
**▲ NA** Use Cut Bank altimeter setting, if not received use Great Falls altimeter setting and increase all DA 81 feet and all MDA 100 feet; increase LPV all Cats visibility ¼ mile, LNAV/VNAV all Cats visibility ½ mile, LNAV Cats C/D and Circling Cat C/D visibilities ¼ mile.

MISSED APPROACH: Climb to 9000 direct YENUP and hold, continue climb-in-hold to 9000.

CTB ASOS <b>119.025</b>	SALT LAKE CITY CENTER <b>133.4 285.4</b>	UNICOM <b>122.8 (CTAF) 0</b>
----------------------------	---	---------------------------------



ELEV <b>3443</b>	TDZE <b>3427</b>																									
<table border="1"> <thead> <tr> <th>CATEGORY</th> <th>A</th> <th>B</th> <th>C</th> <th>D</th> </tr> </thead> <tbody> <tr> <td>LPV DA</td> <td colspan="4">3733-1 306 (300-1)</td> </tr> <tr> <td>LNAV/VNAV DA</td> <td colspan="4">3783-1½ 356 (400-1½)</td> </tr> <tr> <td>LNAV MDA</td> <td>3800-1</td> <td>373 (400-1)</td> <td>3800-1½</td> <td>373 (400-1½)</td> </tr> <tr> <td><b>C</b> CIRCLING</td> <td>4020-1 577 (600-1)</td> <td>4080-1 637 (700-1)</td> <td>4100-1¾ 657 (700-1¾)</td> <td>4220-2½ 777 (800-2½)</td> </tr> </tbody> </table>		CATEGORY	A	B	C	D	LPV DA	3733-1 306 (300-1)				LNAV/VNAV DA	3783-1½ 356 (400-1½)				LNAV MDA	3800-1	373 (400-1)	3800-1½	373 (400-1½)	<b>C</b> CIRCLING	4020-1 577 (600-1)	4080-1 637 (700-1)	4100-1¾ 657 (700-1¾)	4220-2½ 777 (800-2½)
CATEGORY	A	B	C	D																						
LPV DA	3733-1 306 (300-1)																									
LNAV/VNAV DA	3783-1½ 356 (400-1½)																									
LNAV MDA	3800-1	373 (400-1)	3800-1½	373 (400-1½)																						
<b>C</b> CIRCLING	4020-1 577 (600-1)	4080-1 637 (700-1)	4100-1¾ 657 (700-1¾)	4220-2½ 777 (800-2½)																						
MRL Rwy 5-23 and 11-29 0																										

NW-1, 23 MAR 2023 to 20 APR 2023

NW-1, 23 MAR 2023 to 20 APR 2023