

WAAS CH <b>78026</b> <b>W23A</b>	APP CRS <b>230°</b>	Rwy Idg TDZE Apt Elev	<b>5005</b> <b>3443</b> <b>3443</b>
--	------------------------	-----------------------------	---

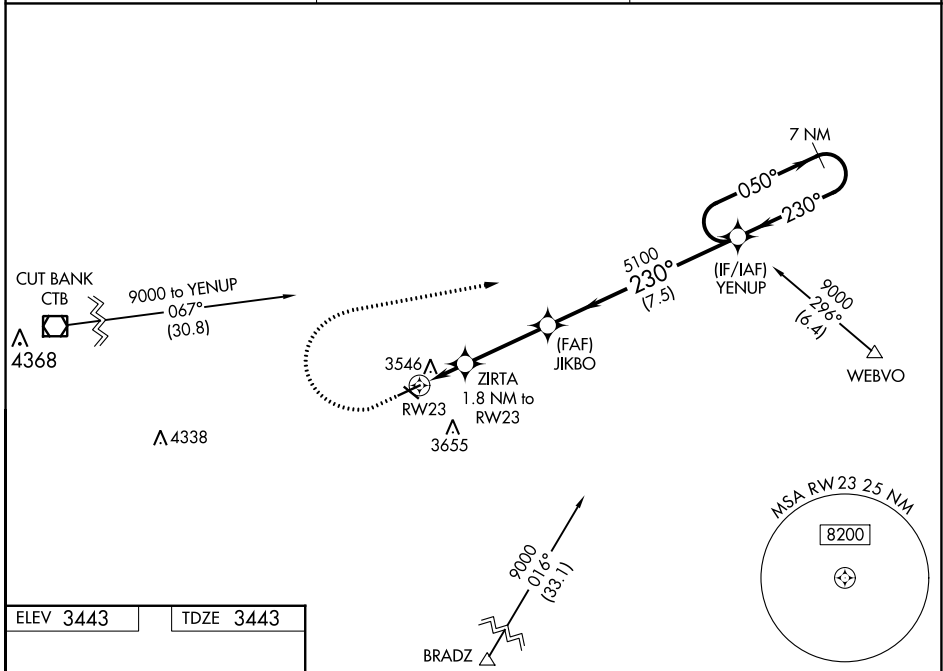
# RNAV (GPS) RWY 23

SHELBY (SBX)

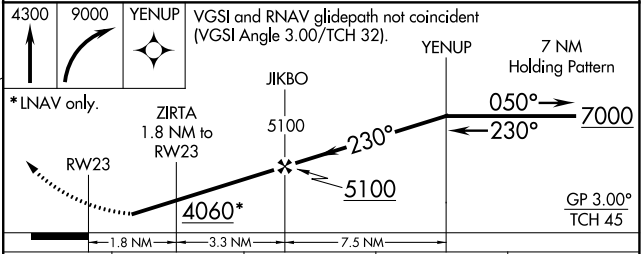
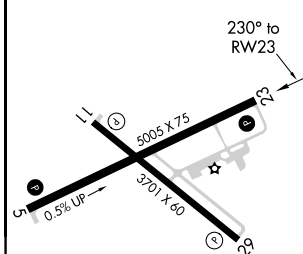
**NA** Baro-VNAV NA. Rwy 23 helicopter visibility reduction below 1 SM NA. DME/DME RNP-0.3 NA. Use Cut Bank altimeter setting, if not received use Great Falls altimeter setting and increase all DA 81 feet and all MDA 100 feet; increase LPV all Cats visibility  $\frac{3}{8}$  mile, LNAV/VNAV all Cats, LNAV Cats C/D, Circling Cats C/D visibilities  $\frac{1}{4}$  mile. Straight-in Rwy 23 NA at night. Circling Rwy 23 NA at night.

MISSED APPROACH: Climb to 4300 then climbing right turn to 9000 direct YENUP and hold, continue climb-in-hold to 9000.

CTB ASOS <b>119,025</b>	SALT LAKE CITY CENTER <b>133.4 285.4</b>	UNICOM <b>122.8 (CTAF)</b>
----------------------------	---	-------------------------------



ELEV 3443	TDZE 3443
-----------	-----------



CATEGORY	A	B	C	D
LPV DA		3799-1 $\frac{1}{8}$	356 (400-1 $\frac{1}{8}$ )	
LNAV/VNAV DA		3813-1 $\frac{1}{4}$	370 (400-1 $\frac{1}{4}$ )	
LNAV MDA	3920-1	477 (500-1)	3920-1 $\frac{3}{8}$	477 (500-1 $\frac{3}{8}$ )
<b>C</b> CIRCLING	4020-1 577 (600-1)	4080-1 637 (700-1)	4100-1 $\frac{3}{4}$ 657 (700-1 $\frac{3}{4}$ )	4220-2 $\frac{1}{2}$ 777 (800-2 $\frac{1}{2}$ )

NW-1, 23 MAR 2023 to 20 APR 2023

NW-1, 23 MAR 2023 to 20 APR 2023