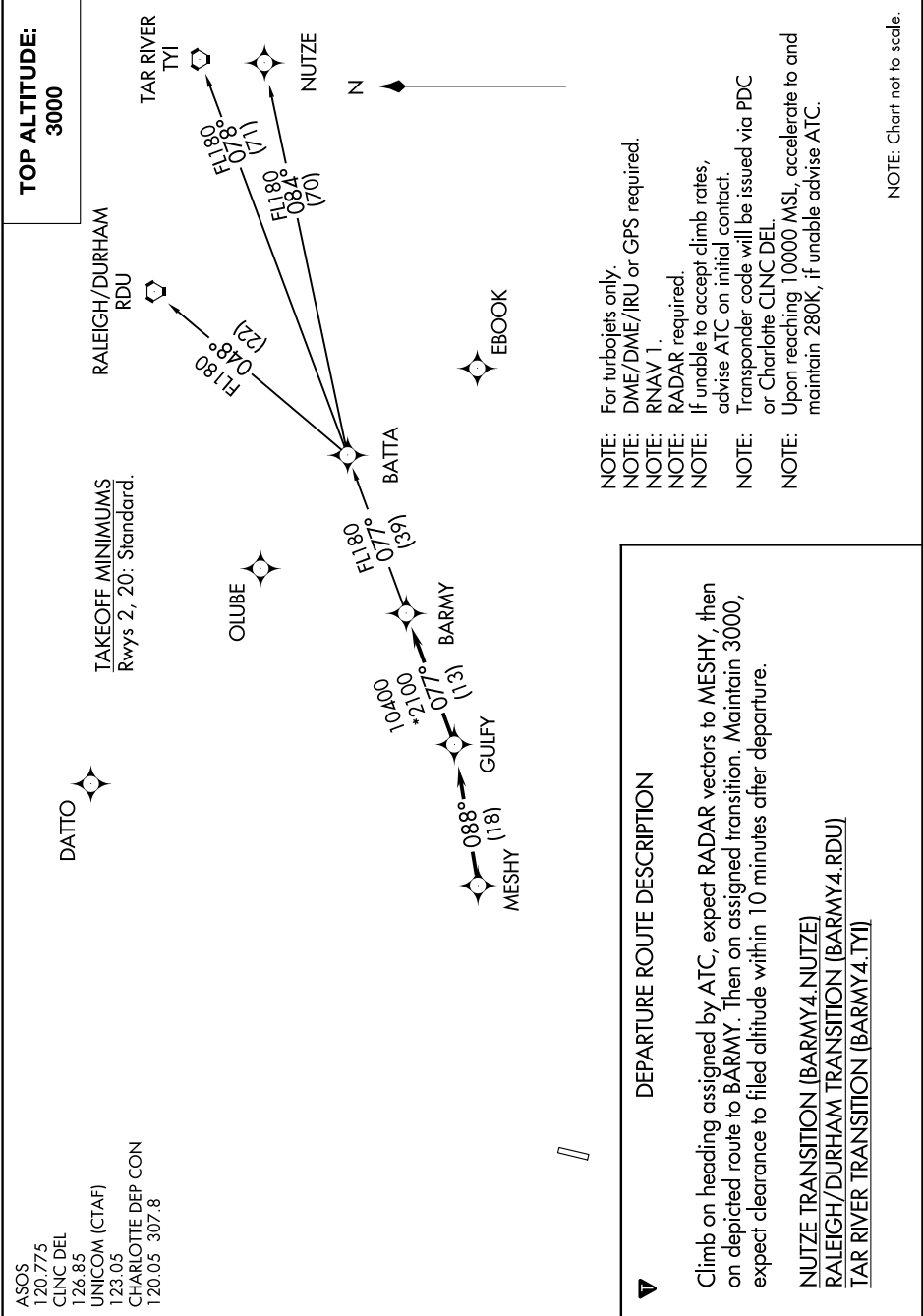


# BARMY FOUR DEPARTURE (RNAV)

SE-2, 23 MAR 2023 to 20 APR 2023



**TOP ALTITUDE:**  
3000

**TAKEOFF MINIMUMS**  
Rwys 2, 20: Standard.

- ASOS 120.775
- CLNC DEL 126.85
- UNICOM (CTAF) 123.05
- CHARLOTTE DEP CON 120.05 307.8

- NOTE: For turbojets only.
- NOTE: DME/DME/IRU or GPS required.
- NOTE: RNAV 1.
- NOTE: RADAR required.
- NOTE: If unable to accept climb rates, advise ATC on initial contact.
- NOTE: Transponder code will be issued via PDC or Charlotte CLNC DEL.
- NOTE: Upon reaching 10000 MSL, accelerate to and maintain 280K, if unable advise ATC.

## DEPARTURE ROUTE DESCRIPTION

Climb on heading assigned by ATC, expect RADAR vectors to MESHY, then on depicted route to BARMY. Then on assigned transition. Maintain 3000, expect clearance to filed altitude within 10 minutes after departure.

- NUITZE TRANSITION (BARMY4.NUITZE)
- RALEIGH/DURHAM TRANSITION (BARMY4.RDU)
- TAR RIVER TRANSITION (BARMY4.TYI)

NOTE: Chart not to scale.

SE-2, 23 MAR 2023 to 20 APR 2023