

CONRA TWO DEPARTURE

SC-3, 23 MAR 2023 to 20 APR 2023

TOP ALTITUDE:
12000

DEPARTURE ROUTE DESCRIPTION

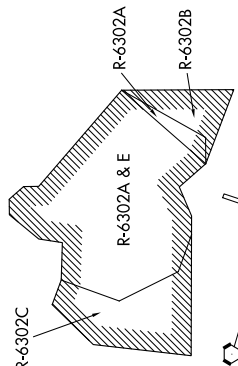
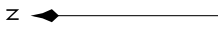
Climb on assigned heading for RADAR vectors to CONRA INT, maintain 3500. Thence

. . . . (transition). Expect filed altitude 10 minutes after departure.

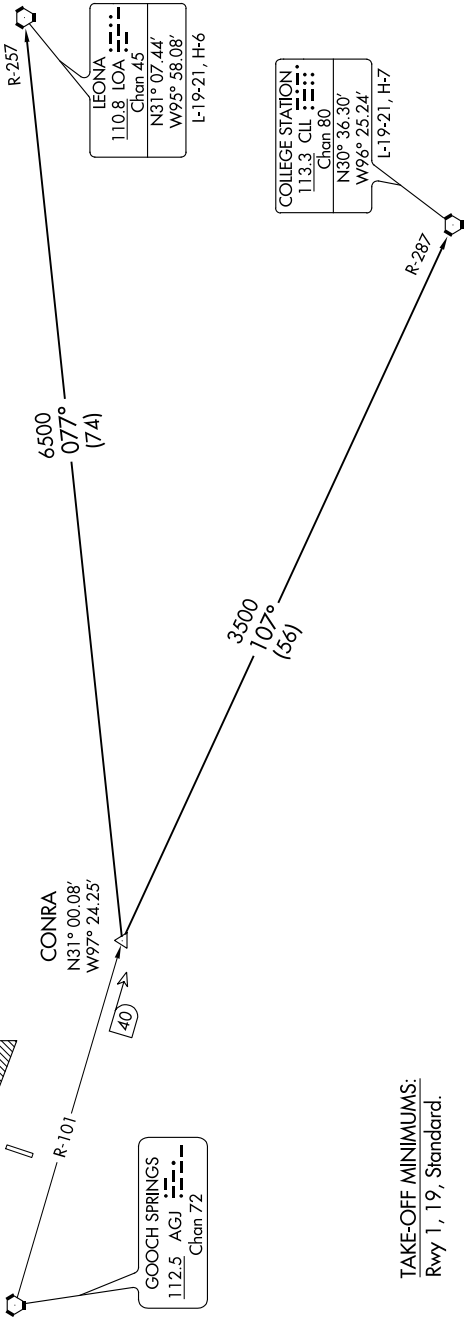
COLLEGE STATION TRANSITION (CONRA2.CIL): From over CONRA INT via CLL R-287 to CLL VORTAC.

LEONA TRANSITION (CONRA2.LOA): From over CONRA INT via LOA R-257 to LOA VORTAC.

AWOS-3PT
128.575
CLNC DEL
121.7
CTAF
122.7
GRAY DEP CON
120.075 323.15



NOTE: RADAR required.



LEONA
110.8 LOA
Chan 45
N31° 07.44'
W95° 58.08'
L-19-21, H-6

COLLEGE STATION
113.3 CLL
Chan 80
N30° 36.30'
W96° 25.24'
L-19-21, H-7

GOOCH SPRINGS
112.5 AGJ
Chan 72

TAKE-OFF MINIMUMS:
Rwy 1, 19, Standard.

NOTE: Chart not to scale.

CONRA TWO DEPARTURE

SC-3, 23 MAR 2023 to 20 APR 2023