

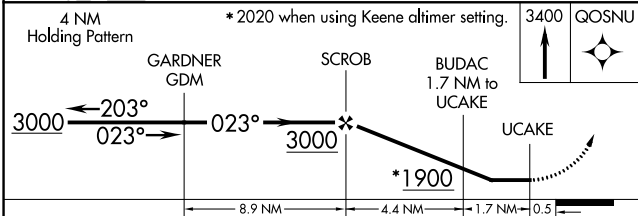
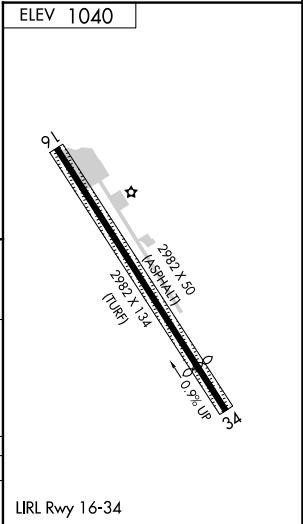
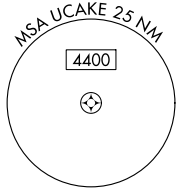
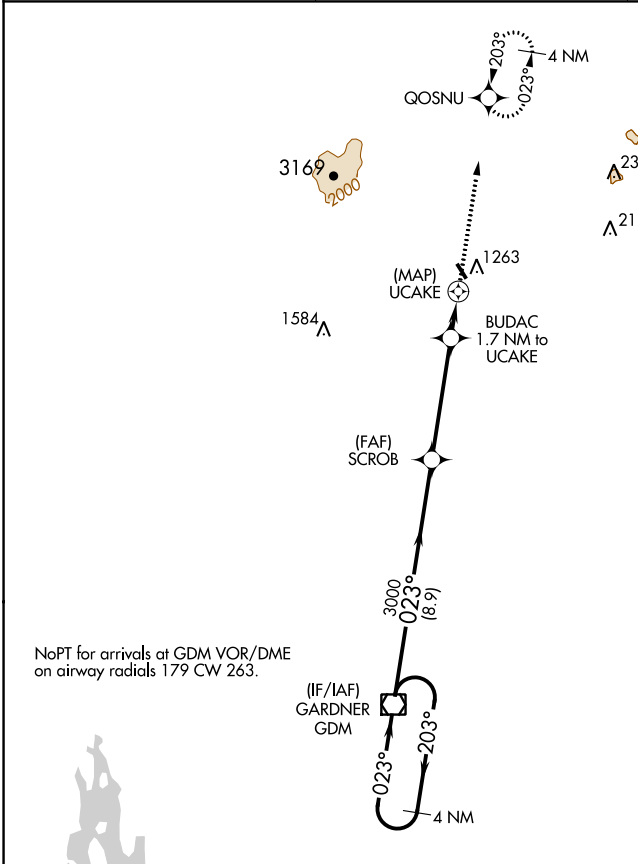
APP CRS <b>023°</b>	Rwy Idg TDZE Apt Elev	<b>N/A</b> <b>N/A</b> <b>1040</b>
------------------------	-----------------------------	---

**RNAV (GPS)-B**  
JAFFREY AIRFIELD SILVER RANCH (A/FN)

RNP APCH-GPS.  
 ▼ When local altimeter setting not received, use Keene altimeter setting and increase all MDA 120 feet and all Cats visibility 1/4 mile. Procedure NA at night.  
 ▲ Rwy 16 and 34 helicopter visibility reduction below 1 SM NA.

MISSED APPROACH: Climb to 3400 direct QOSNU and hold.

ASOS <b>135.875</b>	BOSTON CENTER <b>123.75 338.2</b>	UNICOM <b>122.8 (CTAF)</b>
------------------------	--------------------------------------	-------------------------------



CATEGORY	A	B	C	D
CIRCLING	1760-1 720 (800-1)	1820-1 780 (800-1)	NA	

NE-1, 23 MAR 2023 to 20 APR 2023

NE-1, 23 MAR 2023 to 20 APR 2023