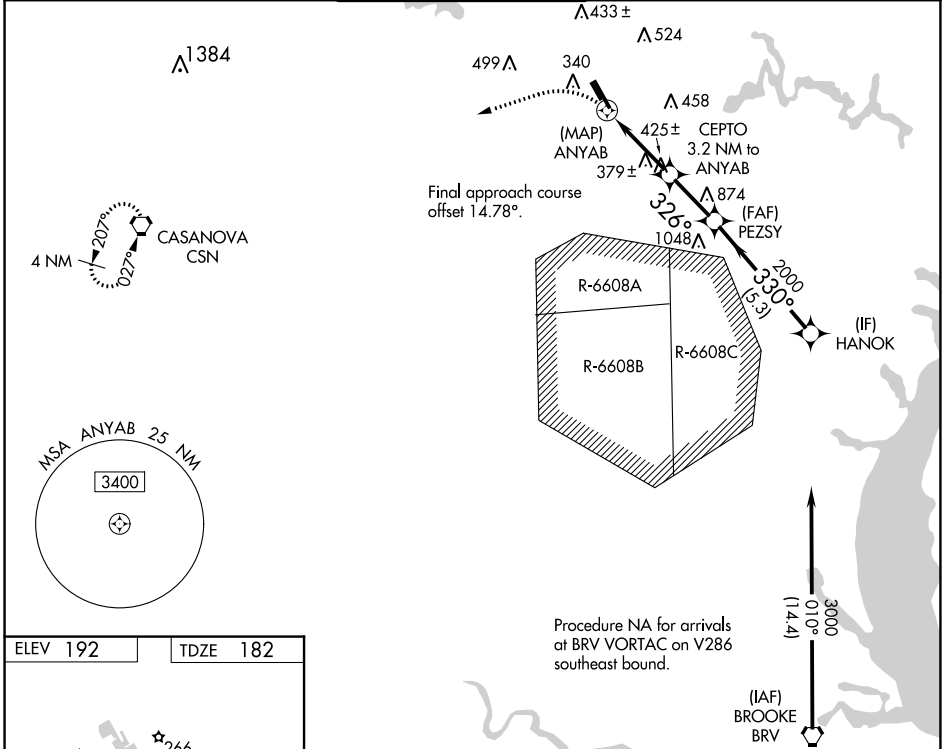


WAAS CH 56239 W34B	APP CRS 326°	Rwy Idg 3715 TDZE 182 Apt Elev 192
--	------------------------	---

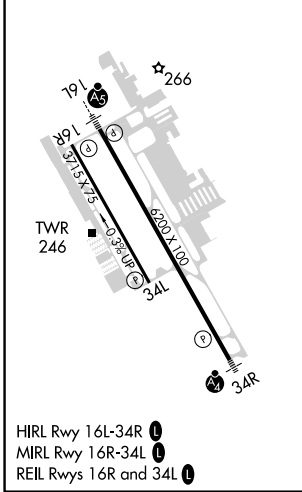
RNAV (GPS) RWY 34L

MANASSAS RGNL/HARRY P DAVIS FLD (HEF)

<p>⚠ DME/DME RNP-0.3 NA. When local altimeter setting not received, use Washington Dulles Intl altimeter setting and increase all MDA 60 feet; increase LNAV Cat C/D and Circling Cat C and D visibility ¼ mile. Helicopter visibility reduction below ¾ SM NA.</p>		<p>MISSED APPROACH: Climbing left turn to 3000 direct CSN VORTAC and hold.</p>			
ATIS 125.175	POTOMAC APP CON 128.525 306.925	MANASSAS TOWER * 133.1 (CTAF) 0 360.75	GND CON 121.8	CLNC DEL 120.2	CLNC DEL 120.2 (When twr closed)



ELEV 192	TDZE 182
----------	----------



3000	CSN	VGSi and descent angles not coincident (VGSi Angle 3.00/TCH 43).		HANOK
		0.9 NM to ANYAB	CEPTO 3.2 NM to ANYAB	
		ANYAB	PEZSY	
		1260	326°	330°
		0.4	0.9	2.4 NM
			2.3 NM	5.3 NM
			2000	3000
			2.79°	
			TCH 40	
CATEGORY	A	B	C	D
LP MDA	640-1	458 (500-1)	640-1 3/8	458 (500-1 3/8)
LNAV MDA	680-1	498 (500-1)	680-1 3/8	498 (500-1 3/8)
CIRCLING	720-1 528 (600-1)	740-1 548 (600-1)	840-1 3/4 648 (700-1 3/4)	880-2 1/4 688 (700-2 1/4)

NE-3, 23 MAR 2023 to 20 APR 2023

NE-3, 23 MAR 2023 to 20 APR 2023