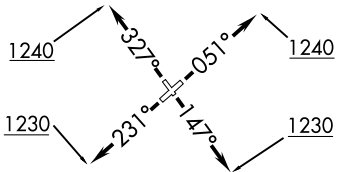


**TOP ALTITUDE:
3000**

ATIS
132.4
GND CON
121.65
WAUKEGAN TOWER★
120.05 273.55
DEP CON
120.55

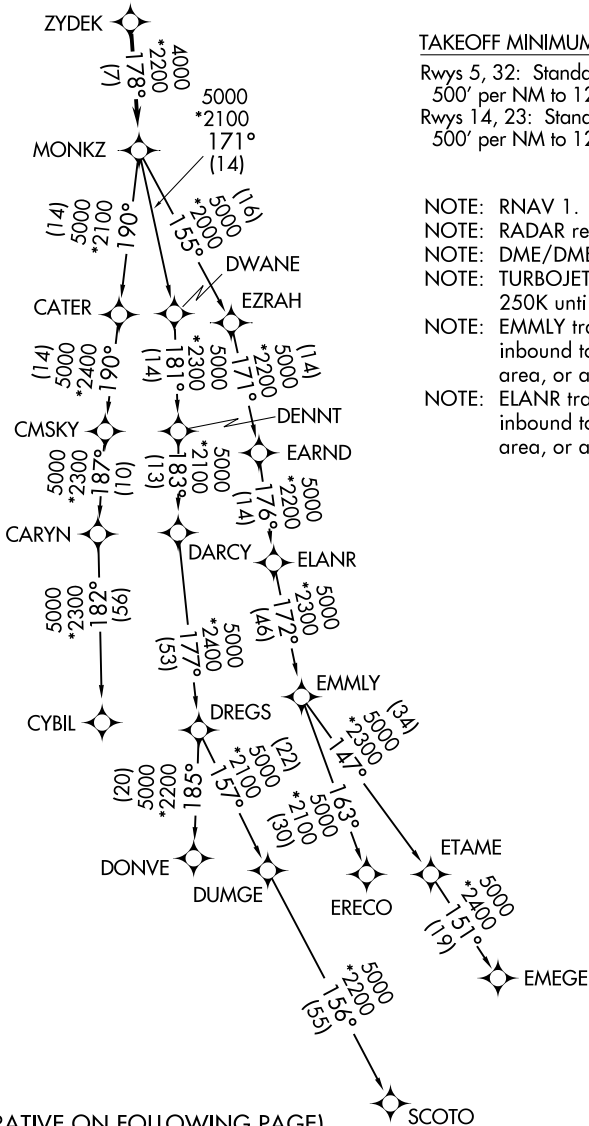


TAKEOFF MINIMUMS

Rwys 5, 32: Standard with minimum climb of 500' per NM to 1240.

Rwys 14, 23: Standard with minimum climb of 500' per NM to 1230.

- NOTE: RNAV 1.
- NOTE: RADAR required.
- NOTE: DME/DME/IRU or GPS required.
- NOTE: TURBOJET departures maintain 250K until advised by ATC.
- NOTE: EMMLY transition: For aircraft inbound to Indianapolis Terminal area, or as assigned by ATC.
- NOTE: ELANR transition: For aircraft inbound to Cincinnati Terminal area, or as assigned by ATC.



(NARRATIVE ON FOLLOWING PAGE)

NOTE: Chart not to scale.

EC-3, 23 MAR 2023 to 20 APR 2023

EC-3, 23 MAR 2023 to 20 APR 2023